



DICHOIC in granite, amber and mineral

Dichroic



FACET / 24 X 24 SQUARE



PET staple fiber + PET felt /

MERGING TONES AND SHIFTING SHAPES CREATE SWEEPING GRADATIONS ACROSS A SPACE. OMBRE VISUALS IN SQUARE AND FACET TILES, **DICHROIC** MIMICS THE TEXTURAL VARIATION OF FELT.

But its real superpower lies within. Constructed from **recycled PET bottles**, Dichroic is a hybrid of soft and hard surface – with a felt visual and the durability of a hard surface.



DICHROIC SQUARE in granite



DICHROIC



DICHROIC SQUARE in mineral, amber and moonstone



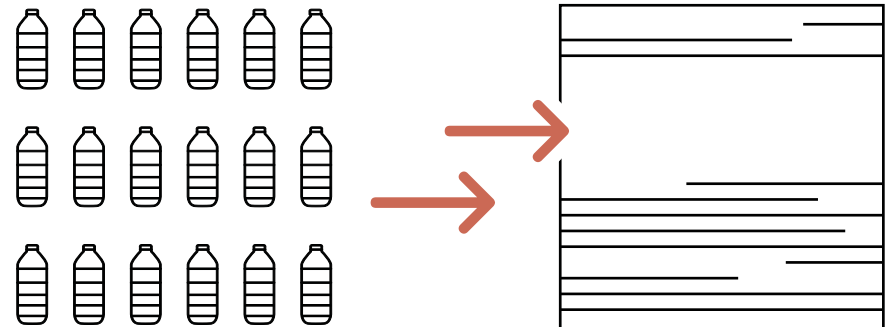
# SO IS IT HARD OR SOFT SURFACE?

Dichroic represents a brand new product category which is a hybrid of both a soft and hard surface, and is considered a **non-woven composite flooring**.

Utilizing recycled bottles which have been turned into PET fiber, Dichroic has approximately 70% recycled content (both post-consumer and post-industrial) which is equivalent to 18 (0.5L) bottles in each 24" X 24" tile of Dichroic.

DICHOIC in granite, mineral and amber

18 PET  
bottles (0.5L) are  
remade into a single  
24 x 24  
inch tile of Dichroic



DICHROIC

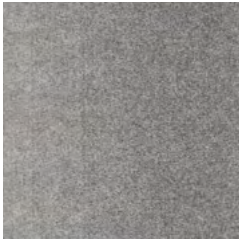


*available in 14 colorways*

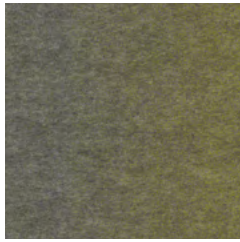


DICHROIC FACET in mineral

COLORWAYS 10544 / 10545



00120 granite



00280 topaz



00300 emerald



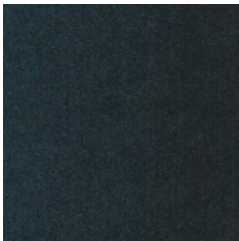
00400 moonstone



00420 sapphire



00440 aquamarine



00490 cobalt



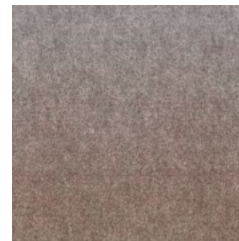
00500 mineral



00550 nickel



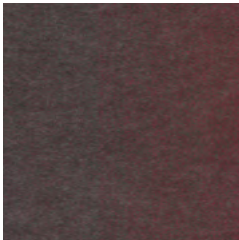
00580 slate



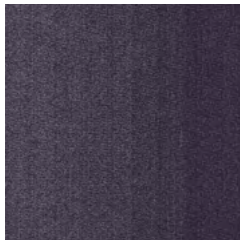
00600 amber



00790 agate



00890 ruby



00900 amethyst

DICHROIC

PET FIBER  
+  
ECOWORX<sup>®</sup> BACKING  
=  
**LOWER, OVERALL EMBODIED  
CARBON FOOTPRINT**







## PRODUCT SPECIFICATIONS

DICHOIC | modular

### DICHOIC SQUARE

style / I0544

product size	24 in x 24 in   60.96 cm x 60.96 cm
face weight	20 oz/yd <sup>2</sup>   678.14 g/m <sup>2</sup>
fiber type	PET
embodied GWP	4.0 kgCO <sub>2</sub> e
backing type	EcoWorx® Tile

### DICHOIC FACET

style / I0545

product size	17 in x 24 in   43.18 cm x 60.96 cm
face weight	20 oz/yd <sup>2</sup>   678.14 g/m <sup>2</sup>
fiber type	PET
embodied GWP	4.0 kgCO <sub>2</sub> e
backing type	EcoWorx® Tile

## INSTALLATION METHODS

### SQUARE /

MONOLITHIC



QUARTER  
TURN



ASHLAR

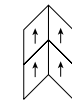


BRICK

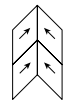


### FACET /

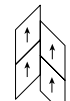
MONOLITHIC



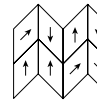
MITRE



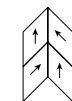
ASHLAR



RANDOM



PARQUET



For full specifications and color, please [visit this collection on the website.](#)

DICHOIC SQUARE in moonstone /

DICHOIC FACET in moonstone and granite



STILL LIFE | *PET staple fiber*