



# Handloom |

PAINTED WEFT / WOODEN WARP

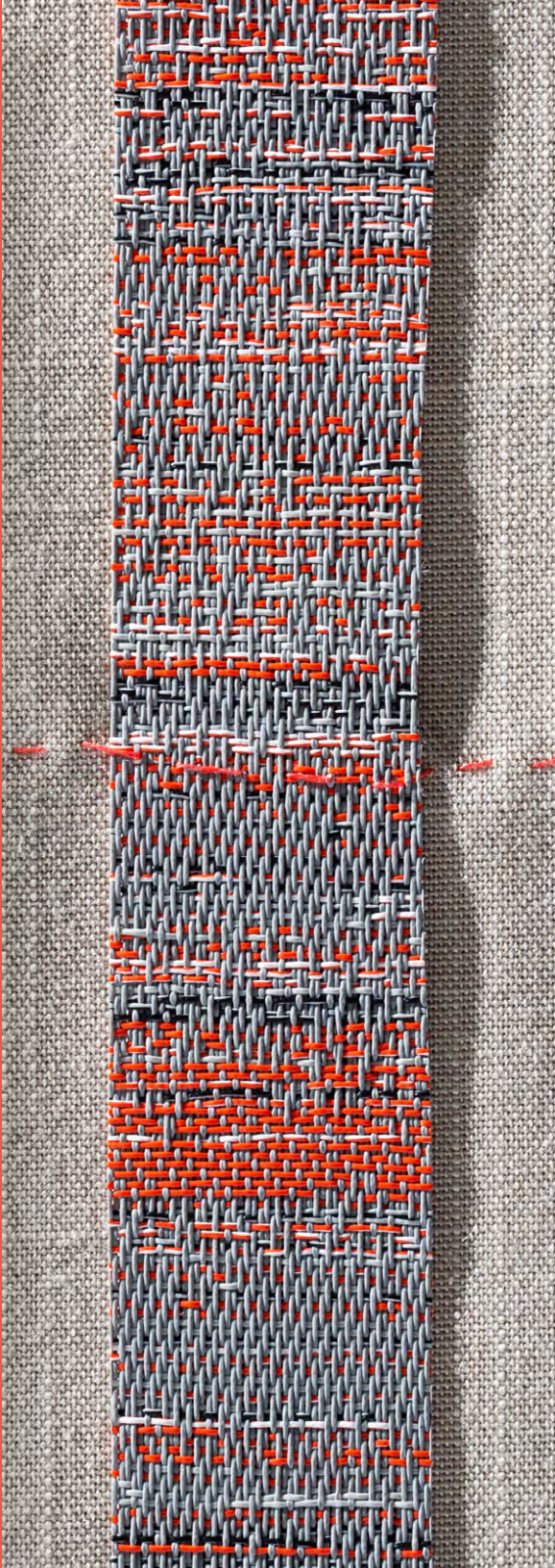


PAINTED WEFT in heddle / WOODEN WARP in cloth

I' M P E R F E C T

HANDLOOM

RESILIENT PLANK / 9 X 36



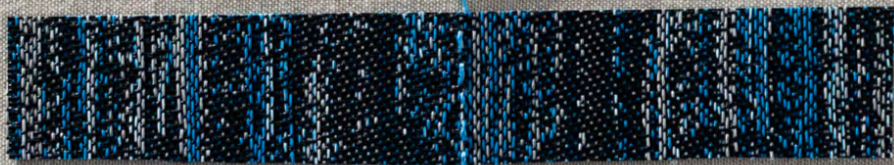
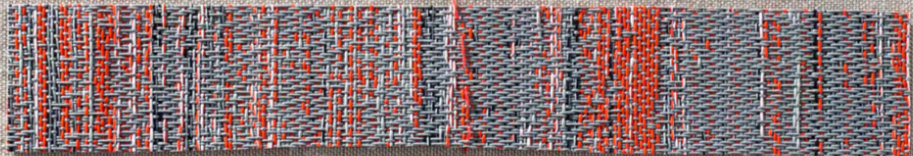
# STITCH

A handwoven pattern recalls the craft of handloomed textiles.

A balance between warp and weft. Neutrals and vivid color.

Traditional craft, reimagined. A brilliant and flawed vision

that never fails to make you look closer.



WE WERE MOVED BY THE ART  
OF HANDLOOMING, AND ITS  
IMPERFECT TEXTURE - WOVEN  
IN THE DETAILS, IDEAS EMERGED  
STITCH BY STITCH.



PAINTED WEFT in heddle



STILL LIFE / *painted weft in color yarn*



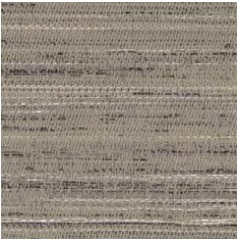
STILL LIFE / *wooden warp in color harness*



HANDLOOM

WOODEN WARP in bobbin

COLORWAYS | I483V | PAINTED WEFT



00130 tapestry



00250 thread



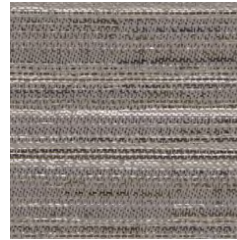
00350 yarn



00490 textile



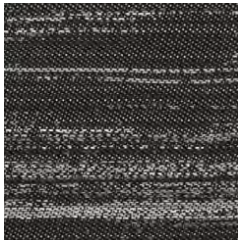
00500 heddle



00540 spool



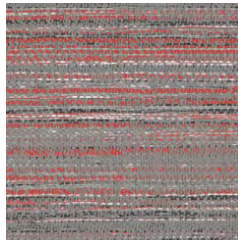
00570 roller



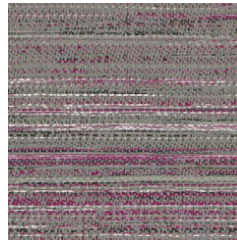
00590 beater



00750 brace



00850 shed

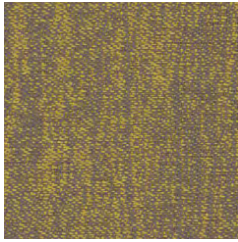


00950 satin

COLORWAYS 1484V | WOODEN WARP



00120 loom



00275 harness



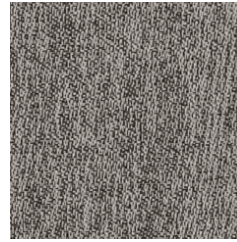
00375 reed



00475 shuttle



00520 cloth



00550 twill



00580 bobbin



00740 doobby



00775 jacquard



00875 beam



## PRODUCT SPECIFICATIONS

HANDLOOM | resilient plank

### PAINTED WEFT

style / I483V

### WOODEN WARP

style / I484V

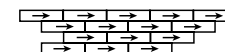
product size	9" x 36"   22.86 cm x 91.44 cm
construction	woven LVT
total thickness	.118" / 3mm
finish	ExoGuard™
installation	glue down

## INSTALLATION METHODS

MONOLITHIC



BRICK



HERRINGBONE



STAGGER



WOODEN WARP in bobbin, reed & shuttle

For full specifications and color, please [visit this collection on the website.](#)