

Subtle Impressions

FLORACULTURE / PERENNIAL / PRESSED



FLORACULTURE in larkspur and lupine. / PERENNIAL in larkspur

A CRUSHED FLOWER ABOUT TO BLOOM

SUBTLE IMPRESSIONS

CARPET TILE / 12 X 48





CRUSH

Flowers crushed onto a textured canvas
bloom anew. A garden of vivid color
can't live forever. Or can it?

A BOUQUET OF PERFECT
PETALS WAS THE START OF
OUR QUEST TO FIND THE
BEAUTY THAT LIVES INSIDE.



*We rolled, hammered and crushed
fresh blooms to reveal a new kind
of vivid beauty.*



STILL LIFE / *quashed posies bloom anew*



FLORACULTURE in larkspur

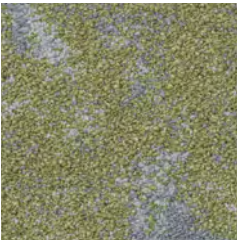


PERENNIAL in lupine

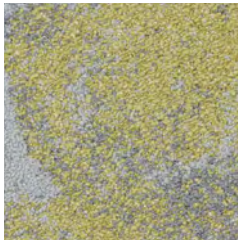


An experiment in abstract arrangements. Blurring the lines between broken and unbroken.

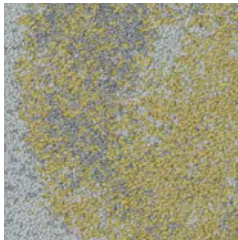
COLORWAYS 10529 | FLORACULTURE



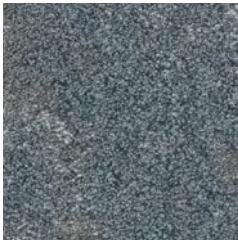
00513 calla



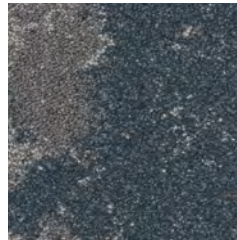
00516 tansy



00519 marigold



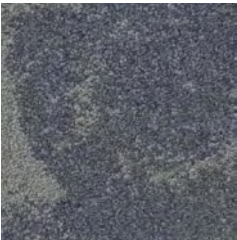
00533 bluet



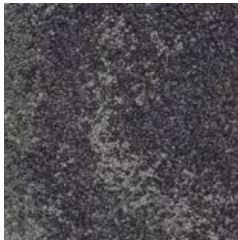
00536 larkspur



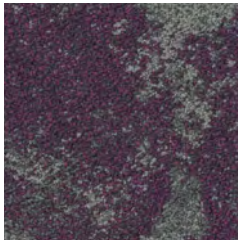
00539 lupine



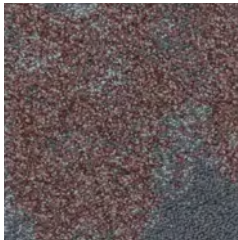
00543 lavender



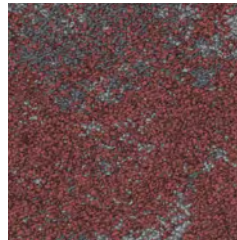
00546 aster



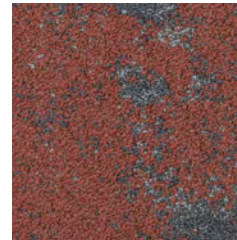
00549 orchid



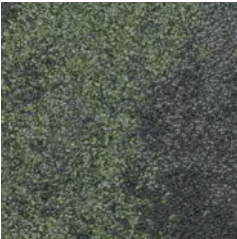
00553 sedum



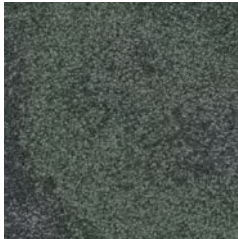
00556 poppy



00559 sudeberry



00593 chartreuse

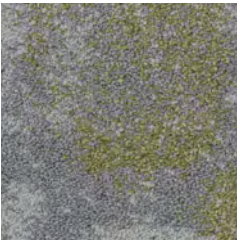


00596 clover

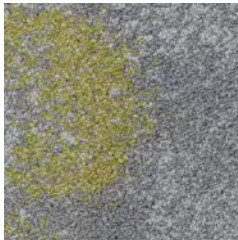


00599 ivy

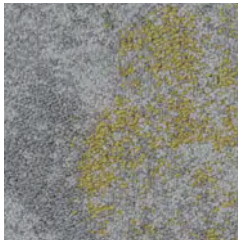
COLORWAYS 10530 | PERENNIAL



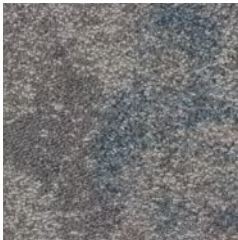
00513 calla



00516 tansy



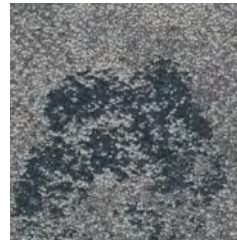
00519 marigold



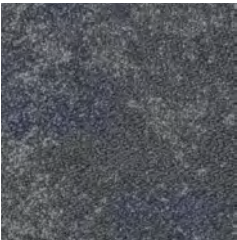
00533 bluet



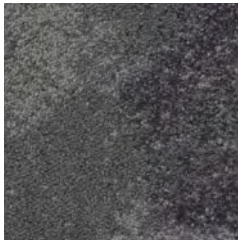
00536 larkspur



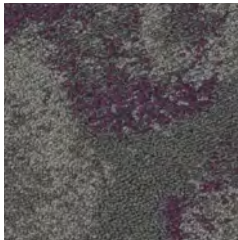
00539 lupine



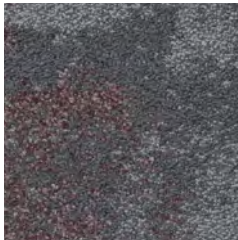
00543 lavender



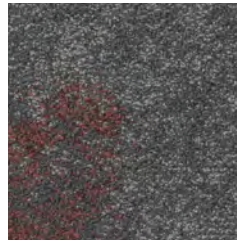
00546 aster



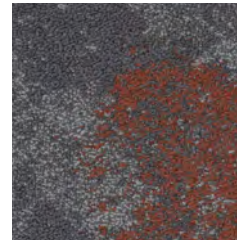
00549 orchid



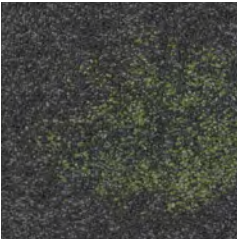
00553 sedum



00556 poppy



00559 sudeberry



00593 chartreuse

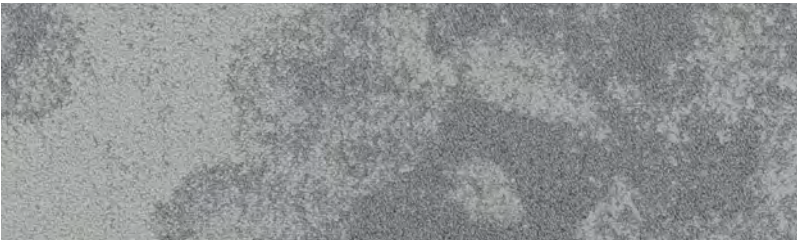


00596 clover

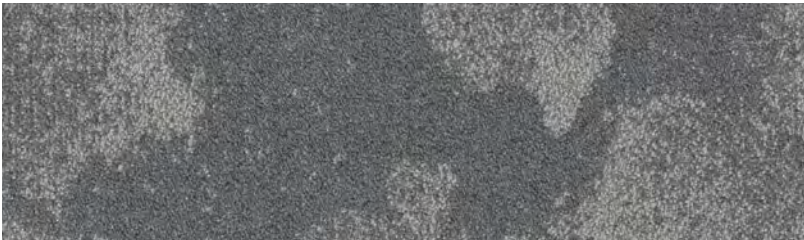


00599 ivy

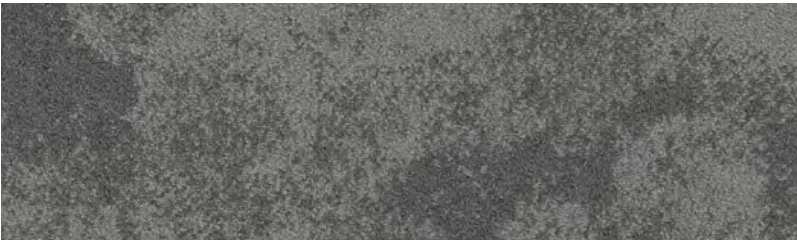
COLORWAYS 10531 | PRESSED



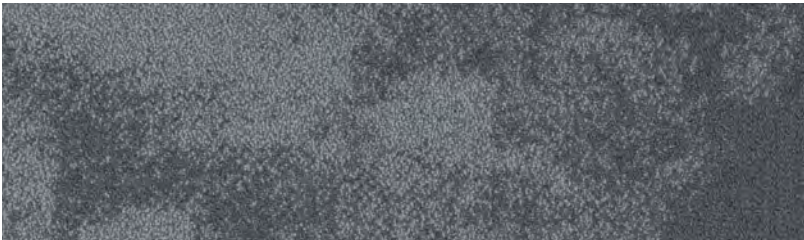
00510 mist



00530 gray



00540 greige



00550 pewter



00590 charcoal



PRODUCT SPECIFICATIONS

SUBTLE IMPRESSIONS | modular

FLOACULTURE

style / 10529

product size	12" x 48" 30.48 cm x 121.92 cm
gauge	1/10th 39.37 per 10 cm
tufted yarn weight	26 oz./yd ² 881.58 g/m ²
stitches per inch	8.7 per inch 34.12 per 10 cm
fiber type	EcoSolution Q [®] Nylon
backing type	EcoWorx [®] Tile

PERENNIAL

style / 10530

product size	12" x 48" 30.48 cm x 121.92 cm
gauge	1/10th 39.37 per 10 cm
tufted yarn weight	26 oz./yd ² 881.58 g/m ²
stitches per inch	9.8 per inch 38.71 per 10 cm
fiber type	EcoSolution Q [®] Nylon
backing type	EcoWorx [®] Tile

PRESSED

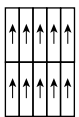
style / 10531

product size	12" x 48" 30.48 cm x 121.92 cm
gauge	1/10th 39.37 per 10 cm
tufted yarn weight	24 oz./yd ² 813.76 g/m ²
stitches per inch	10 per inch 39.37 per 10 cm
fiber type	EcoSolution Q [®] Nylon
backing type	EcoWorx [®] Tile

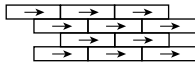
PERENNIAL in lupine / PRESSED in gray

INSTALLATION METHODS

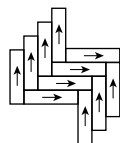
MONOLITHIC



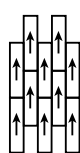
BRICK



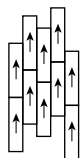
HERRINGBONE



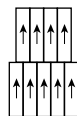
ASHLAR



STAGGER



OFFSET



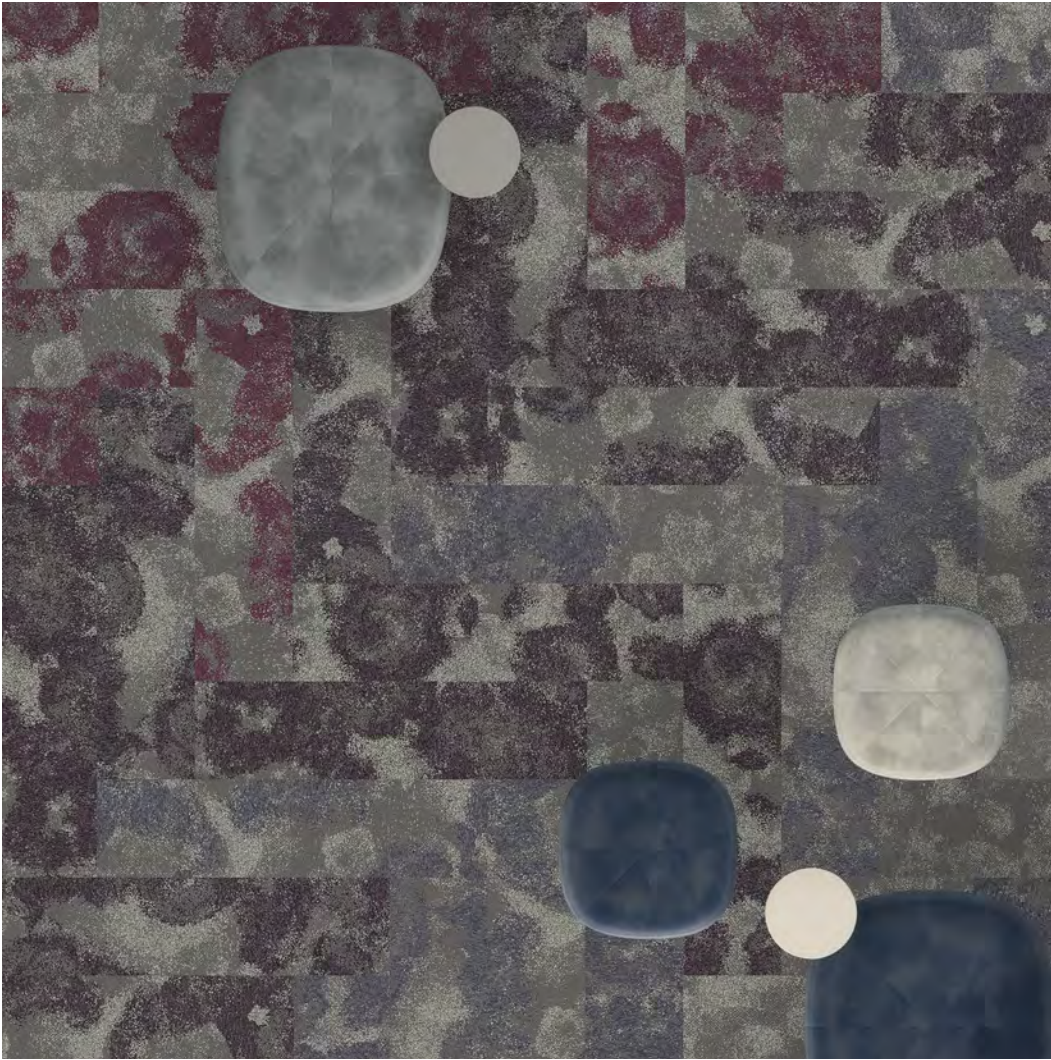
For full specifications and color, please [visit this collection on the website.](#)



Watercolor blooms are the happiest accidents.



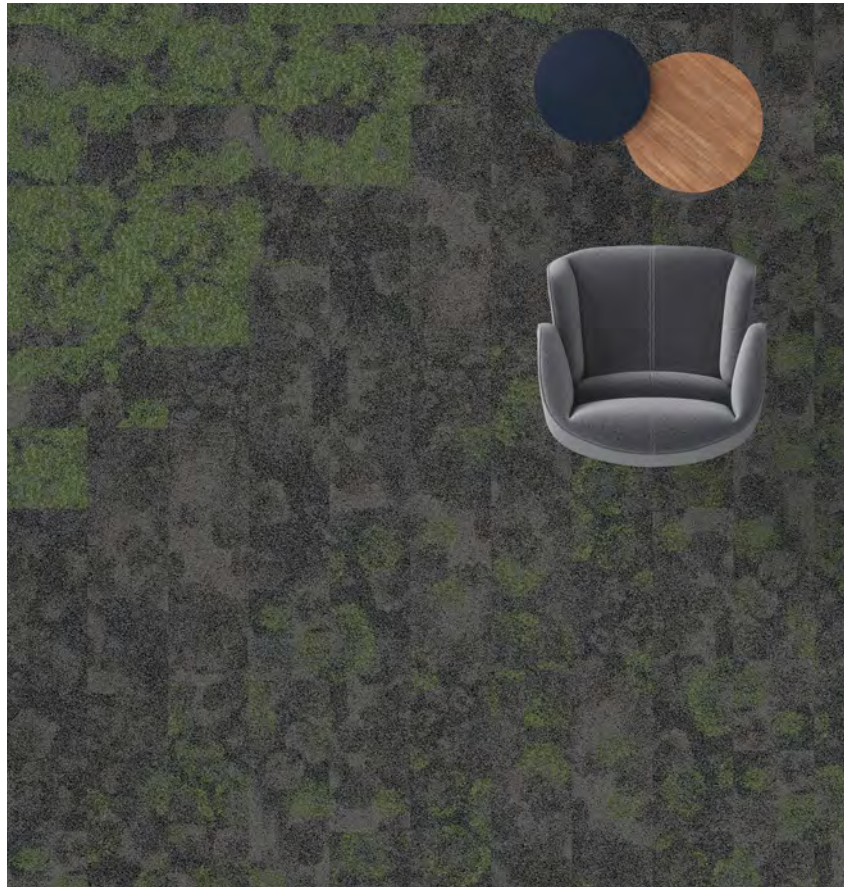
PRESSED in gray



FLORACULTURE in orchid, aster and lavender



SUBTLE IMPRESSIONS



FLORACULTURE in chartreuse / PERENNIAL in chartreuse / PRESSED in charcoal



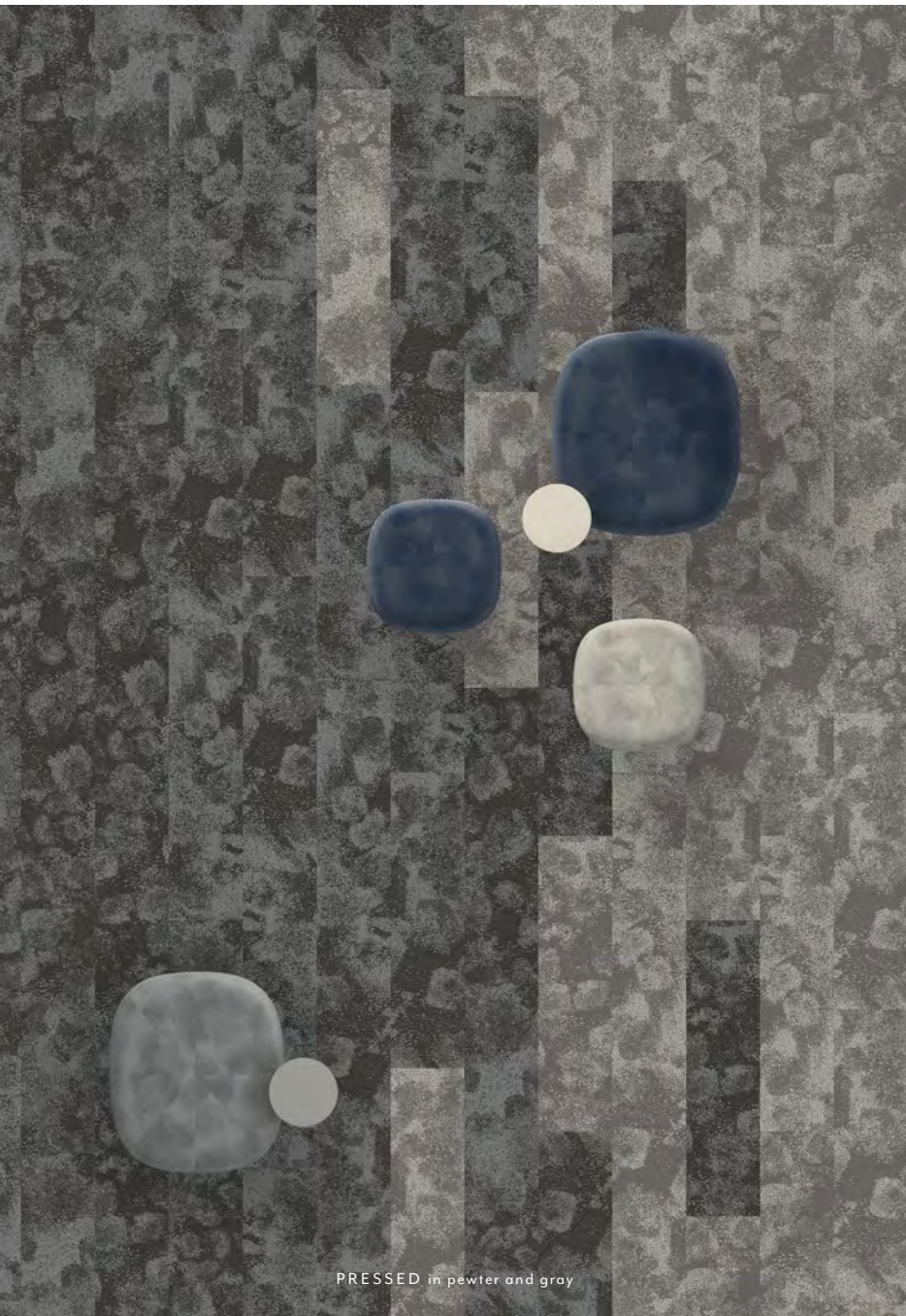
SUBTLE IMPRESSIONS

FLORACULTURE in chartreuse and ivy / PERENNIAL in chartreuse and ivy

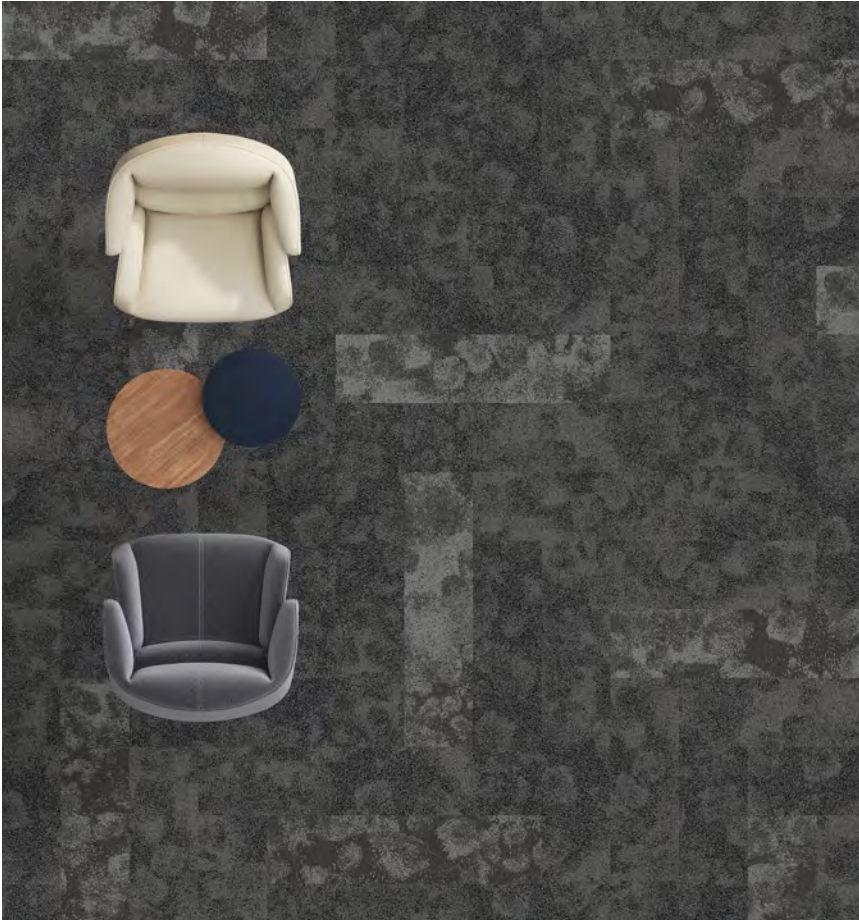
SUBTLE IMPRESSIONS



FLORACULTURE in marigold / PERENNIAL in calla



PRESSED in pewter and gray



PRESSED in charcoal and pewter



FLORACULTURE in sedum, suedeberry and poppy / PERENNIAL in sedum, suedeberry and poppy



FLORACULTURE in poppy and suedeberry / PRESSED in pewter



No. 501 / larkspur

No. 201 / lavender

No. 550 / orchid

No. 401 / aster

No. 575 / lupine

No. 595 / bluet

No. 650 / chartreuse

No. 150 / suedebery

No. 236 / poppy

No. 101 / calla

No. 150 / suedebery

No. 140 / sedum

No. 675 / chartreuse

No. 676 / clover

No. 625 / clover

No. 340 / marigold

No. 300 / tansy

No. 575 / ivy