



Deconstructed Form



GRAPHIC ARC / GRAPHIC SLANT / STRUCTURE ARC / STRUCTURE SLANT / TEXTURE ARC / TEXTURE SLANT

GRAPHIC SLANT and STRUCTURE SLANT in geo and angle / installed in herringbone

DECONSTRUCTED FORM



GRAPHIC ARC in radius with INSET in pure gold / installation in monolithic and herringbone



GRAPHIC SLANT in geo / installation in stagger

DECONSTRUCTED FORM



DECONSTRUCTED FORM



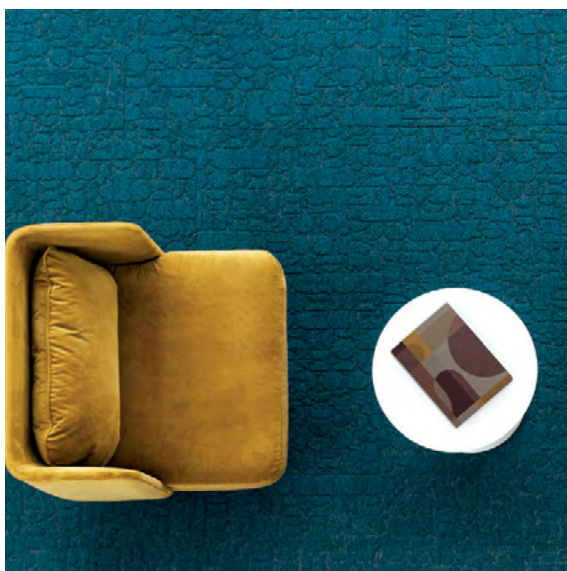
STRUCTURE ARC in obtuse /
installation in herringbone



Cream Fleece
233

wall color by Benjamin Moore

DECONSTRUCTED FORM



TEXTURE ARC in radius and acute /
installation in herringbone

DECONSTRUCTED FORM



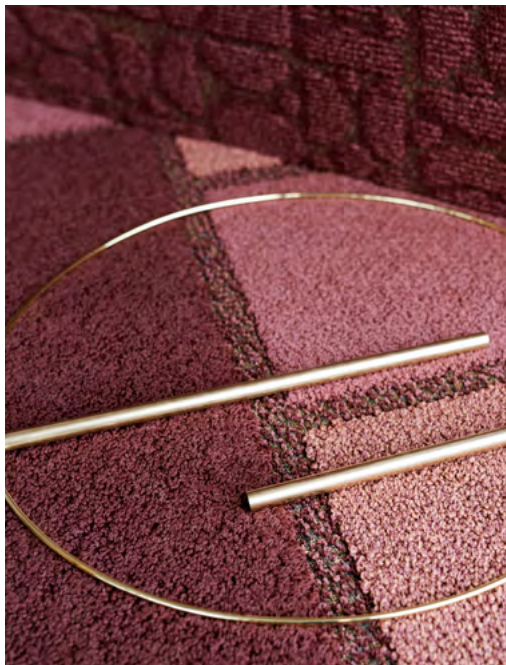
TEXTURE SLANT in contour and parallel /
installation in basketweave

DECONSTRUCTED FORM



GRAPHIC SLANT, STRUCTURE SLANT & TEXTURE SLANT in contour
with INSET in native silver / installation in stagger

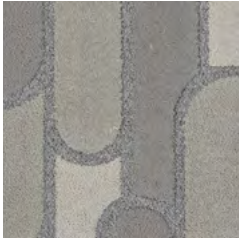
DECONSTRUCTED FORM



GRAPHIC ARC & TEXTURE ARC in angle / installation in stagger

COLORWAYS

10597 | GRAPHIC ARC



00100 point



00150 contour



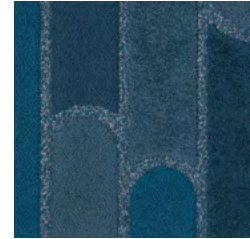
00200 parallel



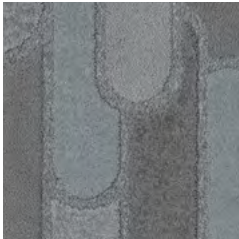
00380 shape



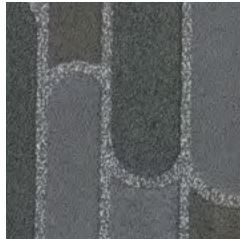
00420 geo



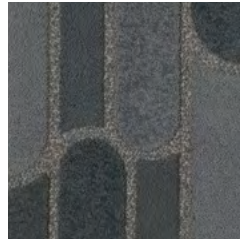
00460 acute



00510 obtuse



00550 line



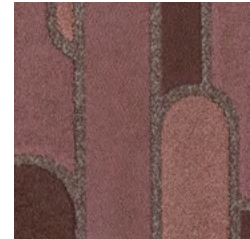
00570 segment



00590 curve



00700 radius

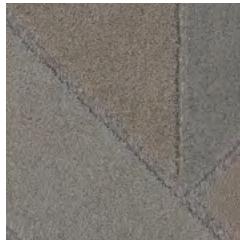


00850 angle

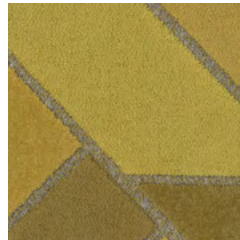
10598 | GRAPHIC SLANT



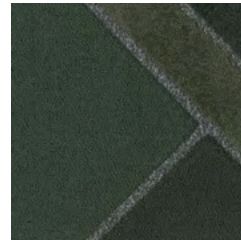
00100 point



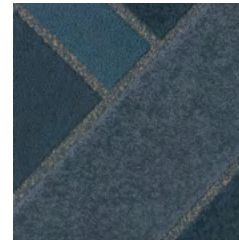
00150 contour



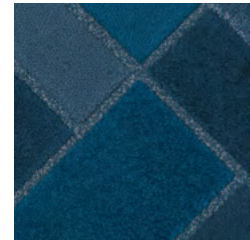
00200 parallel



00380 shape



00420 geo



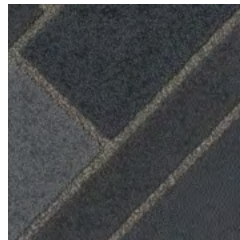
00460 acute



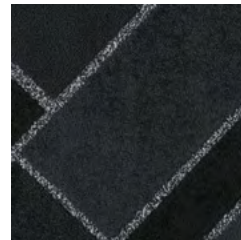
00510 obtuse



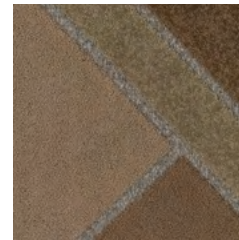
00550 line



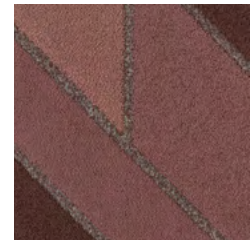
00570 segment



00590 curve



00700 radius



00850 angle

COLORWAYS

10599 | STRUCTURE ARC



00100 point



00150 contour



00200 parallel



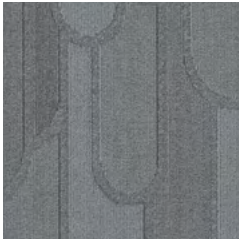
00380 shape



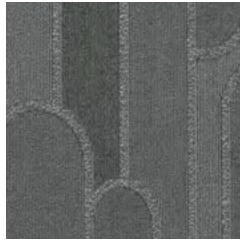
00420 geo



00460 acute



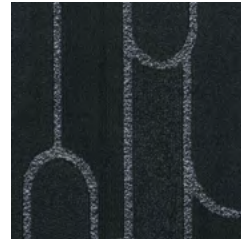
00510 obtuse



00550 line



00570 segment



00590 curve

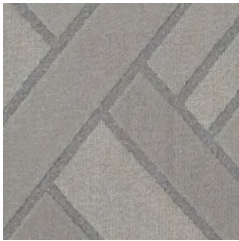


00700 radius



00850 angle

10600 | STRUCTURE SLANT



00100 point



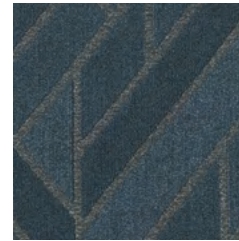
00150 contour



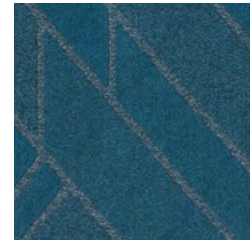
00200 parallel



00380 shape



00420 geo



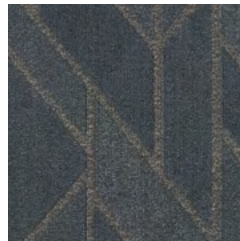
00460 acute



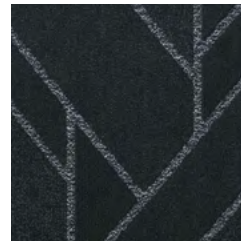
00510 obtuse



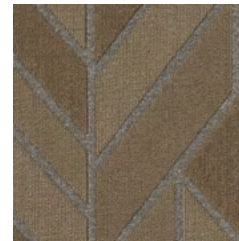
00550 line



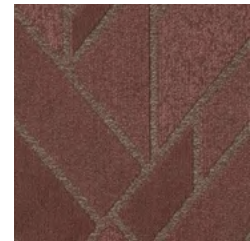
00570 segment



00590 curve



00700 radius



00850 angle

COLORWAYS

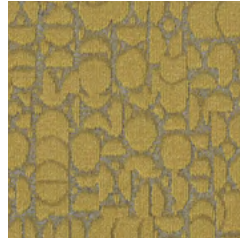
I0601 | TEXTURE ARC



00100 point



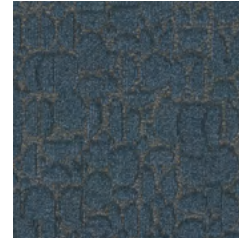
00150 contour



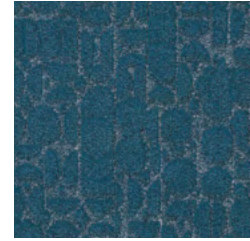
00200 parallel



00380 shape



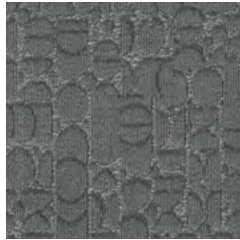
00420 geo



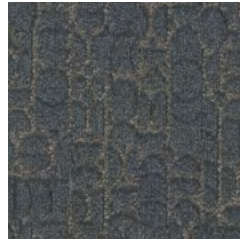
00460 acute



00510 obtuse



00550 line



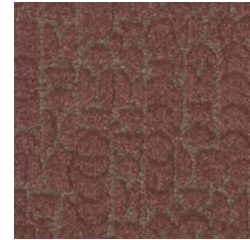
00570 segment



00590 curve



00700 radius

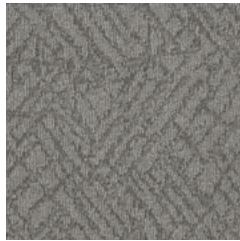


00850 angle

I0602 | TEXTURE SLANT



00100 point



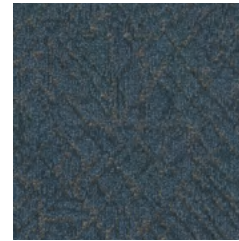
00150 contour



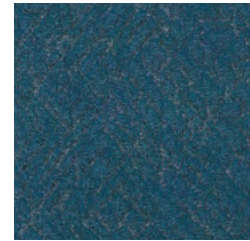
00200 parallel



00380 shape



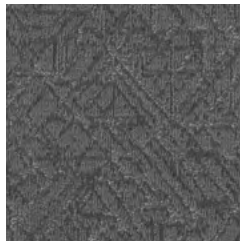
00420 geo



00460 acute



00510 obtuse



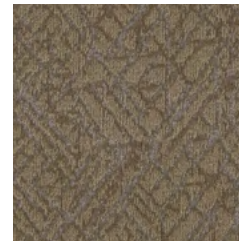
00550 line



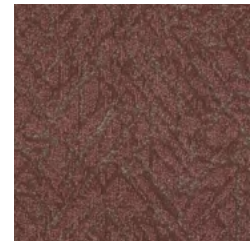
00570 segment



00590 curve



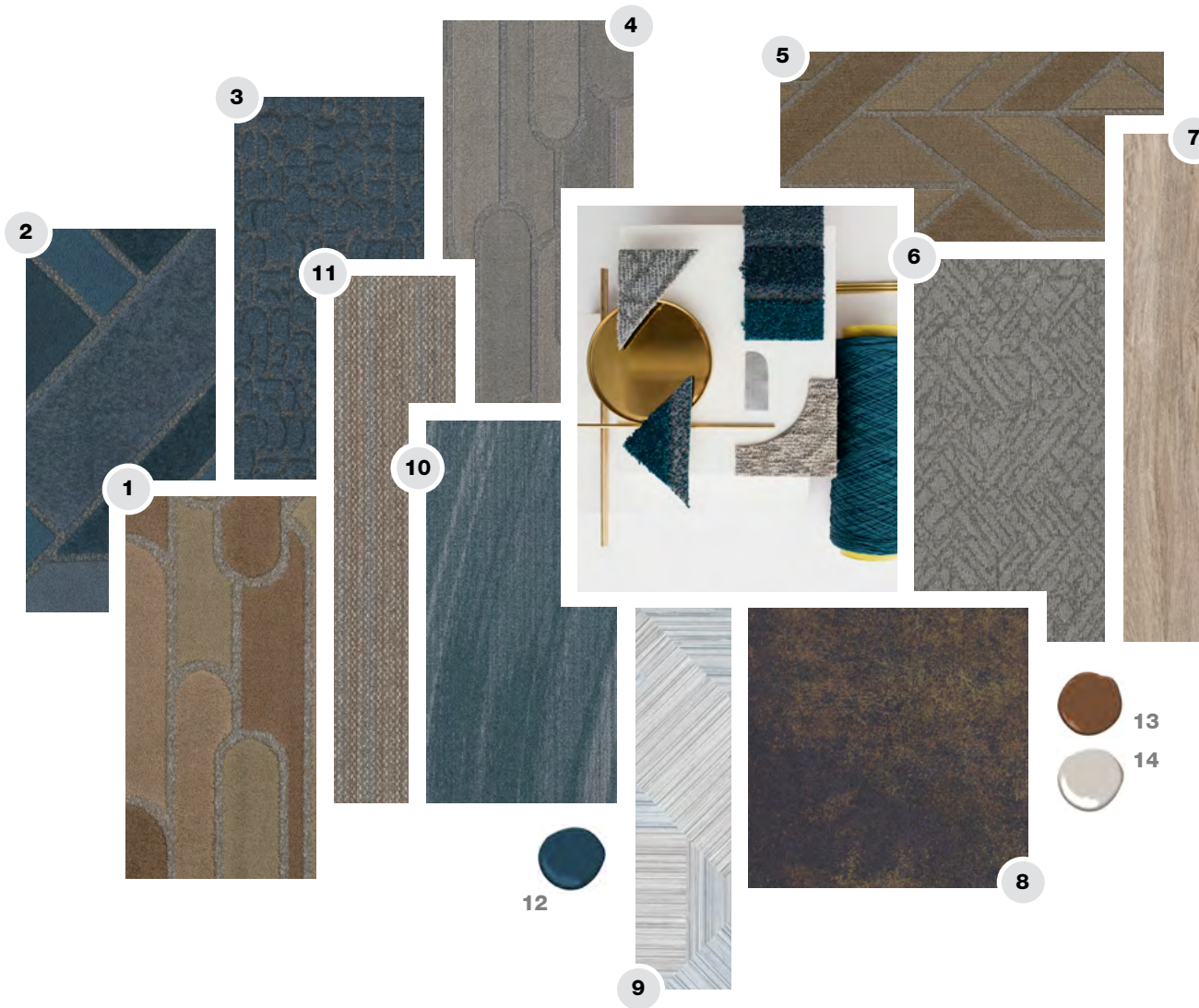
00700 radius



00850 angle

COORDINATING PALETTE STRUCTURE + STABILITY

DECONSTRUCTED FORM



- 1 GRAPHIC ARC 10597 in radius
- 2 GRAPHIC SLANT 10598 in geo
- 3 TEXTURE ARC 10601 in geo
- 4 STRUCTURE ARC 10599 in contour
- 5 STRUCTURE SLANT 10600 in radius
- 6 TEXTURE SLANT 10602 in contour
- 7 RESTON I588V in anise
- 8 OXIDIZED I479V in sapphire
- 9 REACH I601V in explore
- 10 MONOTYPE I0607 in opalite
- 11 INTERLOCK I0583 in suede-bronze
- 12 BENJAMIN MOORE PAINT in Twilight
- 13 BENJAMIN MOORE PAINT in Saddle Brown
- 14 BENJAMIN MOORE PAINT in Wish

COORDINATING PALETTE UNITY + BALANCE

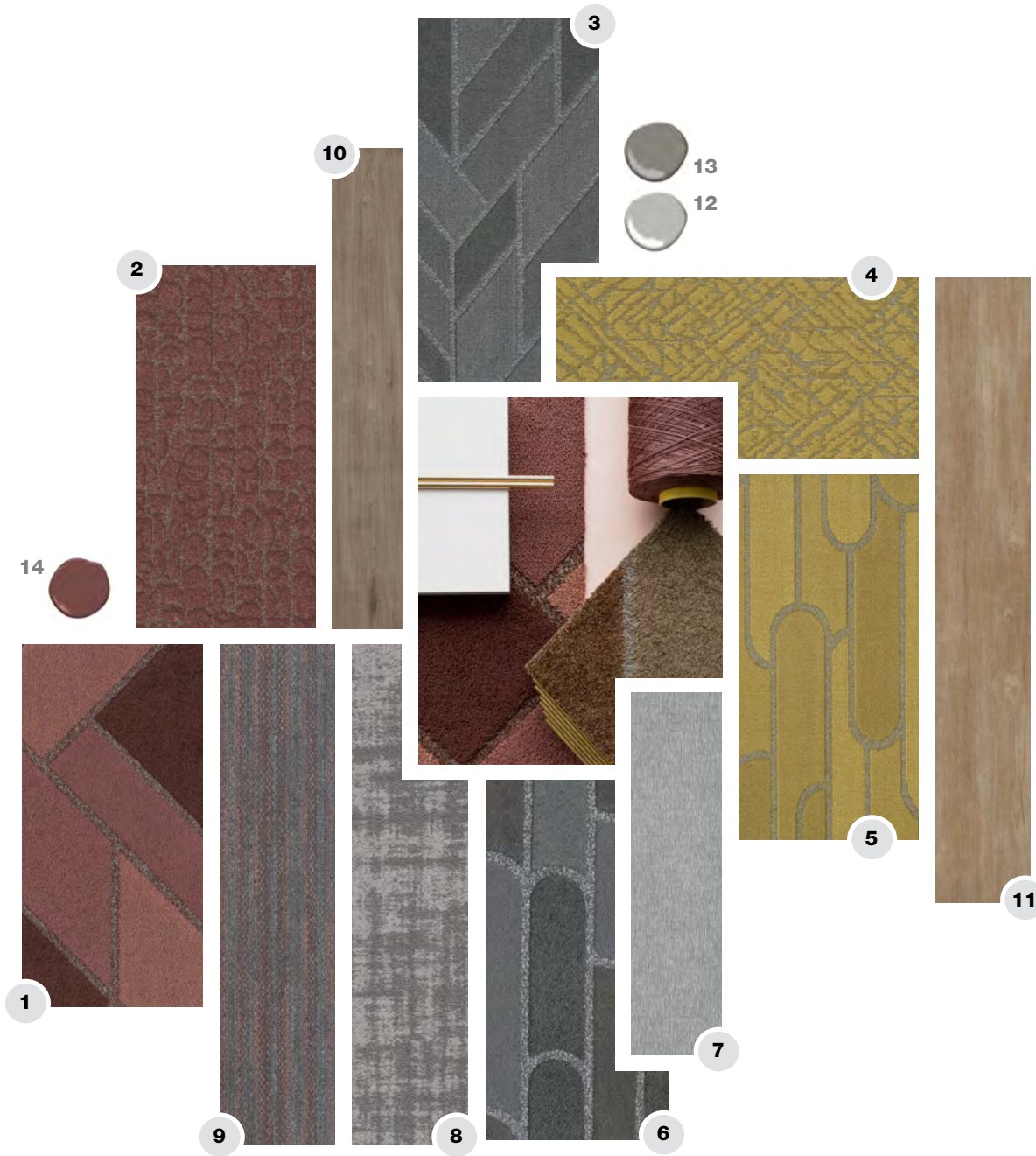
DECONSTRUCTED FORM



- 1 GRAPHIC ARC 10597 in curve
- 2 TEXTURE ARC 10601 in curve
- 3 GRAPHIC SLANT 10598 in obtuse
- 4 STRUCTURE SLANT 10600 in line
- 5 TEXTURE SLANT 10602 in line
- 6 STRUCTURE ARC 10599 in obtuse
- 7 ITERATE I638V in adapt
- 8 MOLTEN I478V in obsidian
- 9 HEIRLOOM TWEED 10549 in black wool
- 10 TIMBER GROVE I559V in hemlock
- 11 UNFOLD 10609 in ash grey
- 12 BENJAMIN MOORE PAINT in Jet Black
- 13 BENJAMIN MOORE PAINT in Gray Owl

COORDINATING PALETTE COMFORT + CONNECTION

DECONSTRUCTED FORM



- 1 GRAPHIC SLANT I0598 in angle
- 2 TEXTURE ARC I0601 in angle
- 3 STRUCTURE SLANT I0600 in line
- 4 TEXTURE SLANT I0602 in parallel
- 5 STRUCTURE ARC I0599 in parallel
- 6 GRAPHIC ARC I0597 in line
- 7 ENERGIZE I602V in intention
- 8 RENEWAL I0615 in restore
- 9 SELVAGE I0584 in linen-rose
- 10 LOCAL RESERVE I592V in sedona
- 11 SPLITWOOD I466V in raw gold
- 12 BENJAMIN MOORE PAINT in Coventry Gray
- 13 BENJAMIN MOORE PAINT in Chelsea Gray
- 14 BENJAMIN MOORE PAINT in Beaujolais

PRODUCT SPECIFICATIONS

DECONSTRUCTED FORM | modular

GRAPHIC ARC

style / I0597

product size	18" x 36" 45.72 cm x 91.44 cm
gauge	1/10 39.37 per 10cm
tufted yarn weight	37 oz./yd ² 1254.55 g/m ²
stitches	10 per inch 39.37 per 10 cm
fiber type	Eco Solution Q [®] Nylon
backing type	EcoWorx [®] Tile

GRAPHIC SLANT

style / I0598

product size	18" x 36" 45.72 cm x 91.44 cm
gauge	1/10 39.37 per 10cm
tufted yarn weight	41 oz./yd ² 1390.14 g/m ²
stitches	10 per inch 39.37 per 10 cm
fiber type	Eco Solution Q [®] Nylon
backing type	EcoWorx [®] Tile

STRUCTURE ARC

style / I0599

product size	18" x 36" 45.72 cm x 91.44 cm
gauge	1/12 47.24 per 10cm
tufted yarn weight	22 oz./yd ² 745.95 g/m ²
stitches	10.2 per inch 40.03 per 10 cm
fiber type	Eco Solution Q [®] Nylon
backing type	EcoWorx [®] Tile

STRUCTURE SLANT

style / I0600

product size	18" x 36" 45.72 cm x 91.44 cm
gauge	1/12 47.24 per 10cm
tufted yarn weight	22 oz./yd ² 745.95 g/m ²
stitches	10.8 per inch 42.65 per 10 cm
fiber type	Eco Solution Q [®] Nylon
backing type	EcoWorx [®] Tile

TEXTURE ARC

style / I0601

product size	18" x 36" 45.72 cm x 91.44 cm
gauge	1/12 47.24 per 10cm
tufted yarn weight	17 oz./yd ² 576.42 g/m ²
stitches	10.2 per inch 40.03 per 10 cm
fiber type	Eco Solution Q [®] Nylon
backing type	EcoWorx [®] Tile

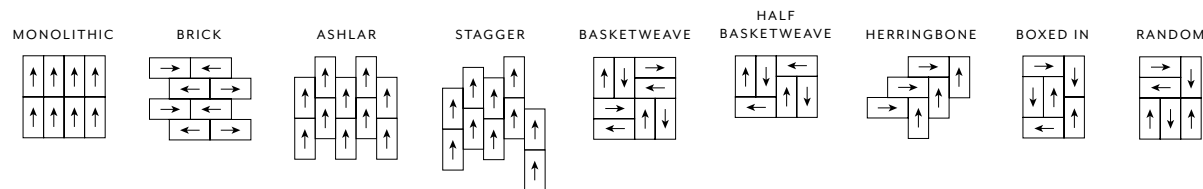
TEXTURE SLANT

style / I0602

product size	18" x 36" 45.72 cm x 91.44 cm
gauge	1/12 47.24 per 10cm
tufted yarn weight	17 oz./yd ² 576.42 g/m ²
stitches	10.2 per inch 40.03 per 10 cm
fiber type	Eco Solution Q [®] Nylon
backing type	EcoWorx [®] Tile

GRAPHIC SLANT, STRUCTURE SLANT & TEXTURE SLANT in shape
with INSET in baked bronze / installation in stagger

INSTALLATION METHODS



For full specifications and color, please [visit this collection on the website.](#)

DECONSTRUCTED FORM



ASCENT RUG /

Expanding on our Deconstructed Form collection by merging different shapes, the Ascent rug highlights the interplay of arcs and angles. Ascent offers elements of both patterns from the Deconstructed Form collection, expanding these styles to include a versatile rug option.

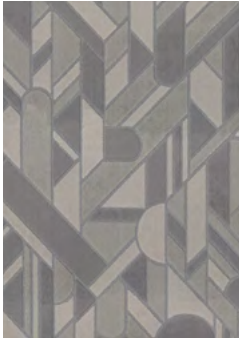
“Having this beautiful rug offering allows for further flexibility in design, carrying the visual theme through to multiple spaces where hard surface flooring is also incorporated.”

– Amanda Hopkins, Product Designer



COLORWAYS

10624 | ASCENT



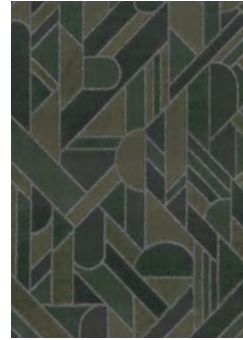
00100 point



00150 contour



00200 parallel



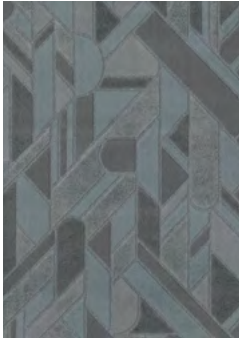
00380 shape



00420 geo



00460 acute



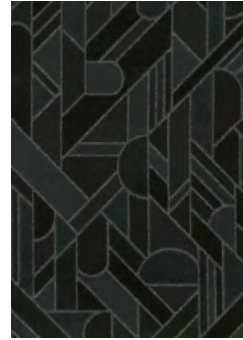
00510 obtuse



00550 line



00570 segment



00590 curve



00700 radius



00850 angle

DECONSTRUCTED FORM

COORDINATING PALETTE ASCENT

DECONSTRUCTED FORM



- 1 ASCENT I0624 in shape*
- 2 ASCENT I0624 in angle*
- 3 ITERATE I638V in scope
- 4 RESTORED I0564 in transform
- 5 SELVAGE I0584 in suede
- 6 NATURAL STATE I533V in basswood
- 7 TEXTURE ARC I0601 in radius
- 8 EASTERN FACADE I0515 in rural
- 9 MOLTEN I478V in granite
- 10 REACH I601V in adapt
- 11 BENJAMIN MOORE PAINT in Beaujolais
- 12 BENJAMIN MOORE PAINT in Boreal Forest
- 13 BENJAMIN MOORE PAINT in Saddle Tan

* Product swatches are meant to represent pattern & color, not the size & scale of product



For full specifications and color, please [visit this collection on the website](#).

PRODUCT SPECIFICATIONS

DECONSTRUCTED FORM | broadloom rug

ASCENT RUG

style / P160T	style / P163T	style / P165T
6' x 9' 182.88 cm x 274.32 cm	8' x 10' 243.84 cm x 304.8 cm	12' x 15' 365.75 cm x 457.2 cm
gauge	1/10 39.37 per 10cm	
tufted yarn weight*	37 oz./yd ² 1254.55 g/m ²	
stitches	10 per inch 39.37 per 10 cm	
fiber type	Eco Solution Q [®] Nylon	
backing type	Ultraloc [®] + Non Skid Backing	

*Due to the design and construction of this product, the tufted weight will vary significantly with a range greater than +/- 7%. Also, any calculations based on tufted weight such as pile density will also vary with a range greater than +/- 7%.

area rug ASCENT in acute
with INSET in ice gold