





TO INSPIRE IS TO TRANSFORM

INSPIRATION CHANGES US AT OUR CORE. WHERE WE REST OUR EYES AND BEGIN TO FEEL IS EXACTLY WHERE WE FIND OURSELVES TRANSFORMED. VISUAL AND VISCERAL, EXPANSIVE AND MIND WIDENING, MACRO AND DOWN DEEP.

THIS INAUGURAL IDEA BOOK IS YOUR PLACE TO CREATE, TO VIEW THE WORLD AROUND YOU WITH IMAGINATION AND INTENTION, TO DISCOVER IMMENSE DESIGN POSSIBILITIES. CURATED COLLECTIONS IN A MULTITUDE OF FORMS, A MIX OF ELEMENTS AND NEW MATERIALS. BOUND TOGETHER BY COLOR AND TEXTURE, PURPOSE AND TREND. PAGE AFTER PAGE, SURFACE UPON SURFACE.

INSPIRE. CREATE. TRANSFORM.

TRANSFORM SPACE

REACTIONS. EXPERIMENTS. NEW MATERIALS.
A SURPRISE ORGANIC ELEMENT. LIGHT PLAYS
ON A SURFACE. BEAUTY IS DISCOVERED IN THE
BREAKDOWN. EMBRACE THE IMPERFECTION.
TOGETHER THESE COLLECTIONS FORM SHAPE,
COLOR AND SURFACE. AND TRANSFORM THE
SPACES THAT SURROUND US.



MONOCHROME & SURFACE TONE 18



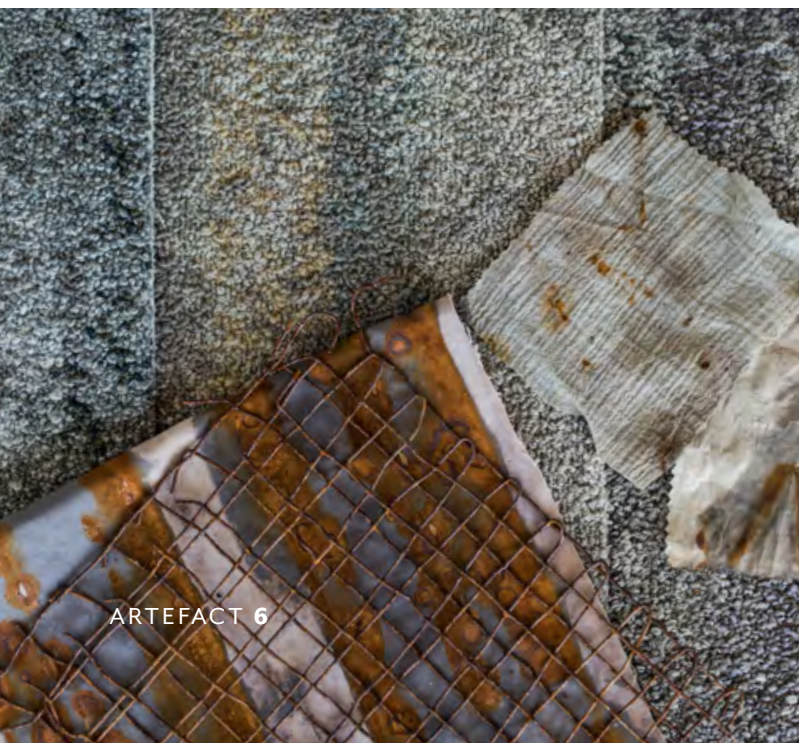
DECONSTRUCTED METAL 48



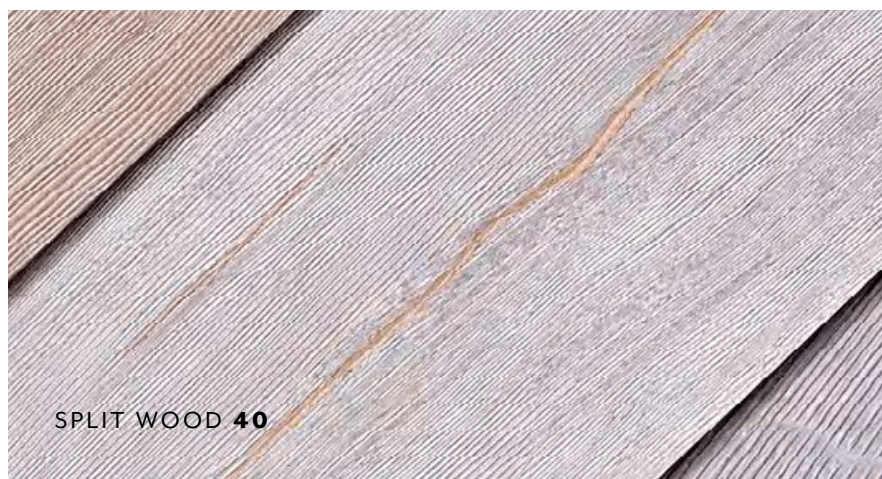
DIGITAL WEAVE 30



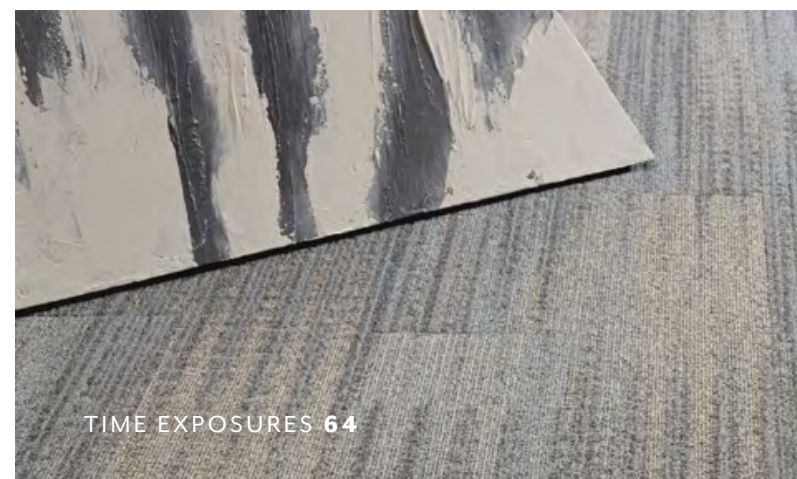
SUBTRACTIVE LAYERS 56



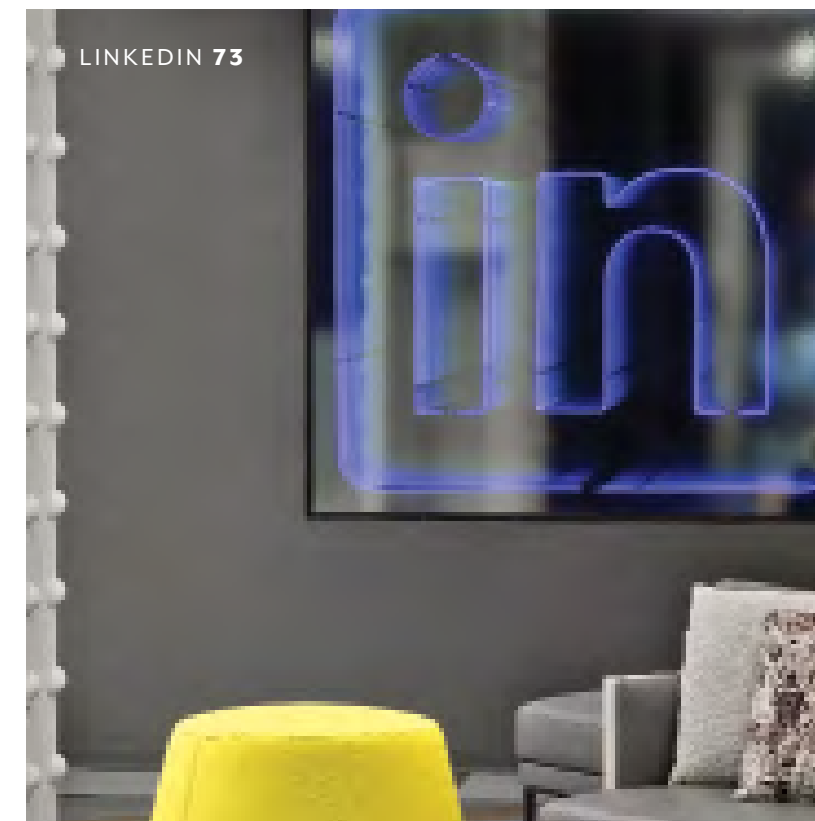
ARTEFACT 6



SPLIT WOOD 40



TIME EXPOSURES 64



LINKEDIN 73



THIEL & THIEL 76



THE
MAKING
OF

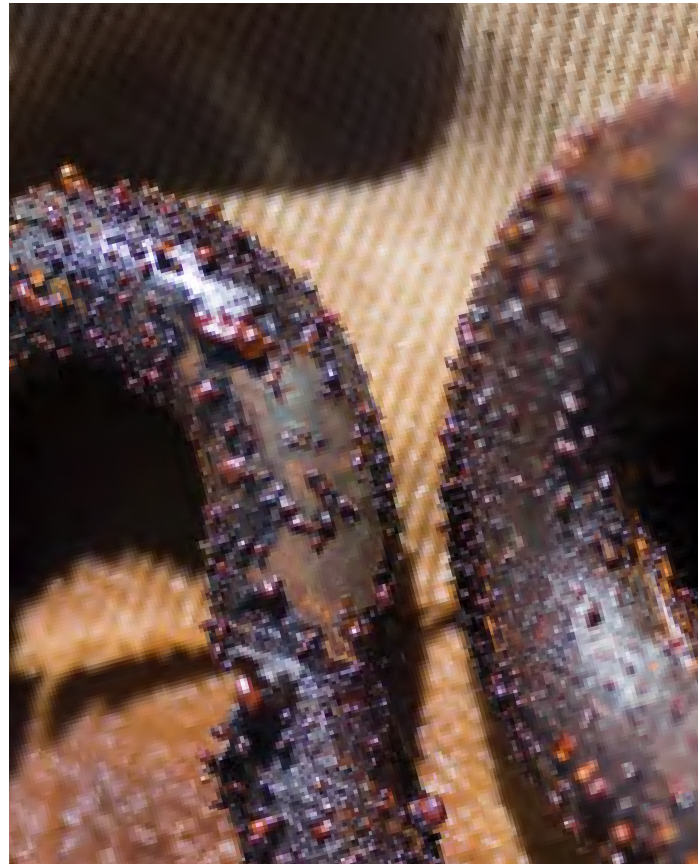
PROCESS, INTERRUPTED AND
UNEXPECTED. HANDS ON, SLEEVES
UP. HIDDEN STORIES ARE REVEALED.
CONTRAST IS ABSTRACT. THIS IS HOW
WE START EACH AND EVERY DAY.



In the making of the Artefact collection, the Patcraft design team explored the effects of oxidation, accelerating the process with textiles and discarded items, discovering the beauty in the breakdown.



ARTEFACT



INSPIRED BY THE OXIDATION PROCESS OF DISCARDED ITEMS EXPOSED TO RUST AND WATER, ARTEFACT IS A STUNNING AND ORGANICALLY-FUSED COLLECTION THAT EXPLORES THE COURSE OF AGE AND WEATHERING – A WATERMARK LEFT WITHIN NATURE. NATURAL REACTIONS USING A RESIST-DYEING TECHNIQUE RESULT IN A VARIETY OF PATTERNS AND ORGANIC COLORS OF VARYING DEPTH, TINT AND SATURATION. EACH OF THE FOUR STYLES REVEAL A GRADUAL SHIFT IN SURFACE TEXTURE, EXPOSING THE HIDDEN STORIES OF OBJECTS WEATHERED BY TIME.



PATINA, ETCHED and REACT in artfully rusted



ETCHED in artfully rusted



PATINA in oxidized surface / RELIC In artfully rusted



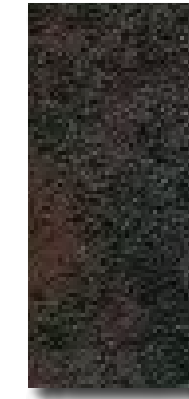
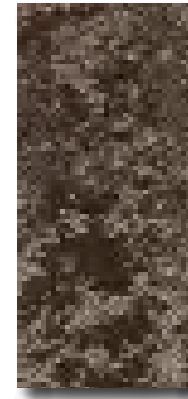
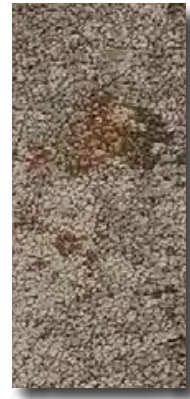
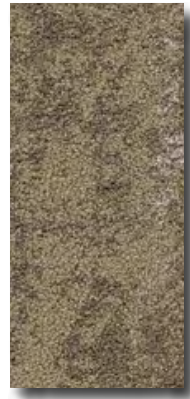


RELIC in artfully rusted

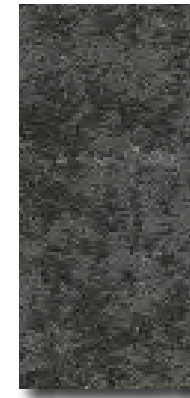
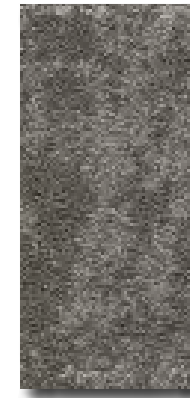
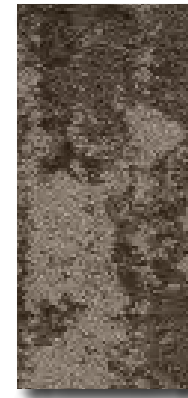
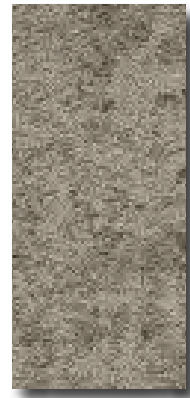


ETCHED and PATINA in artfully rusted

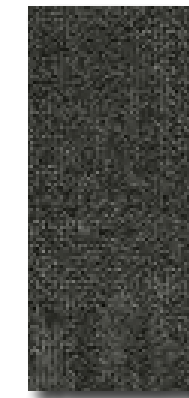
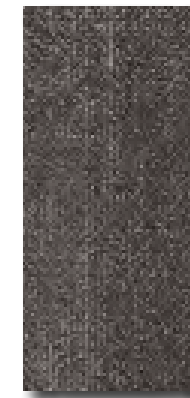
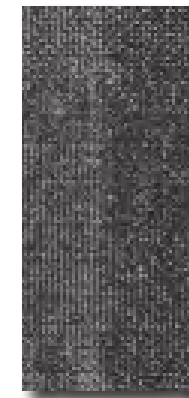
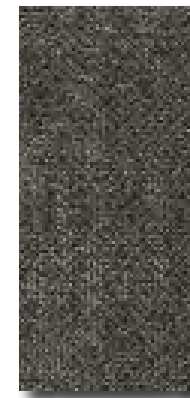
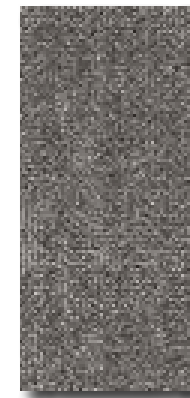
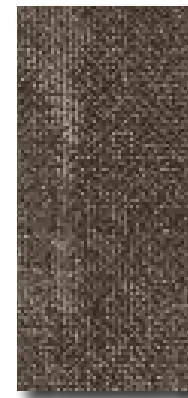
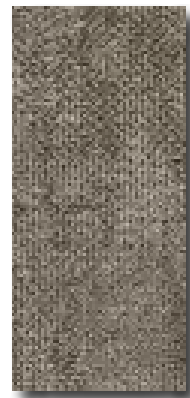
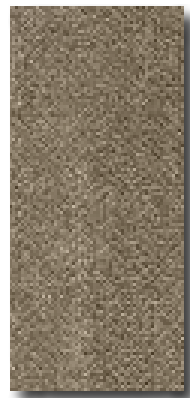
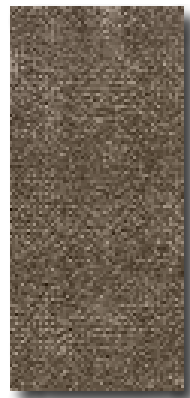
PATINA 10511



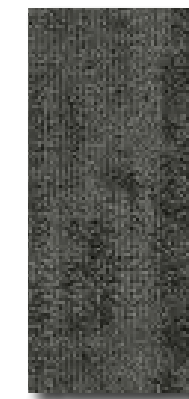
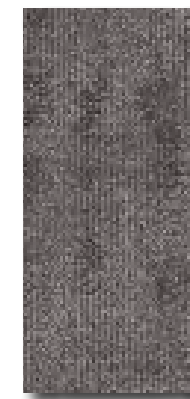
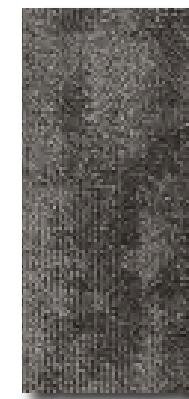
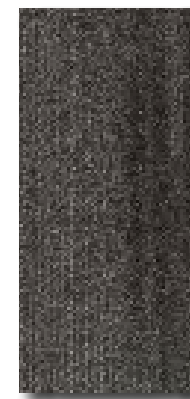
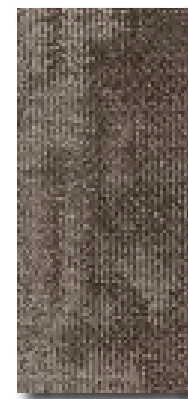
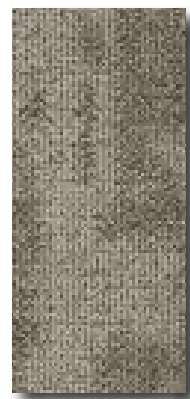
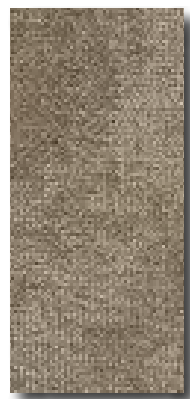
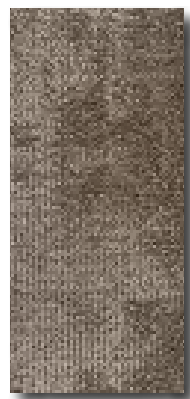
ETCHED 10512



RELIC 10513



REACT 10514



earth hue
00175

mark of time
00200

renewed element
00500

artfully rusted
00525

industrial craft
00540

oxidized surface
00510

metal trace
00530

underling layer
00480

watermark
00450

urban study
00590

MONOCHROME / SURFACE TONE



LIGHT AND SURFACE INTERACT IN TONAL CONTRAST. ABSTRACT ORGANIC VISUALS MIX MATTE AND GLOSS TO CREATE MONOCHROME AND SURFACE TONE. THIS UNIQUE RESILIENT TILE IN CONTRASTING FINISHES, EXPLORES THE VISUAL VARIATION DESIGNED TO CREATE SCALE THROUGH SUBTLE OR BOLD PAIRINGS. OFFERED IN 18X36 AND 9X36 TILES, THE 5MM PRODUCT CONSTRUCTION ALLOWS FOR INSTALLATION ALONGSIDE CARPET WITHOUT THE NEED FOR TRANSITION.



SURFACE TONE in strata and blush / MONOCHROME MATTE in ledge



MONOCHROME / SURFACE TONE

SURFACE TONE in strata and blush / MONOCHROME MATTE in luna



MONOCHROME MATTE in ledge



MONOCHROME GLOSS and MONOCHROME MATTE in ledge



MONOCHROME MATTE and MONOCHROME GLOSS in luna



MONOCHROME / SURFACE TONE



MONOCHROME MATTE in ledge / MONOCHROME MATTE and GLOSS in pearl / SURFACE TONE in porcelain

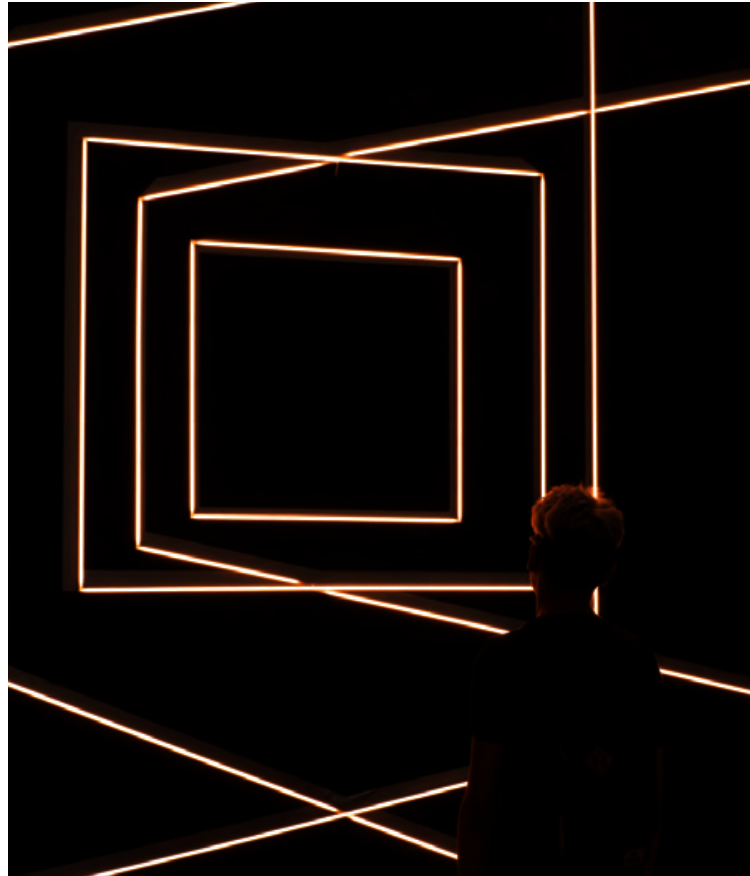


SURFACE TONE in plateau

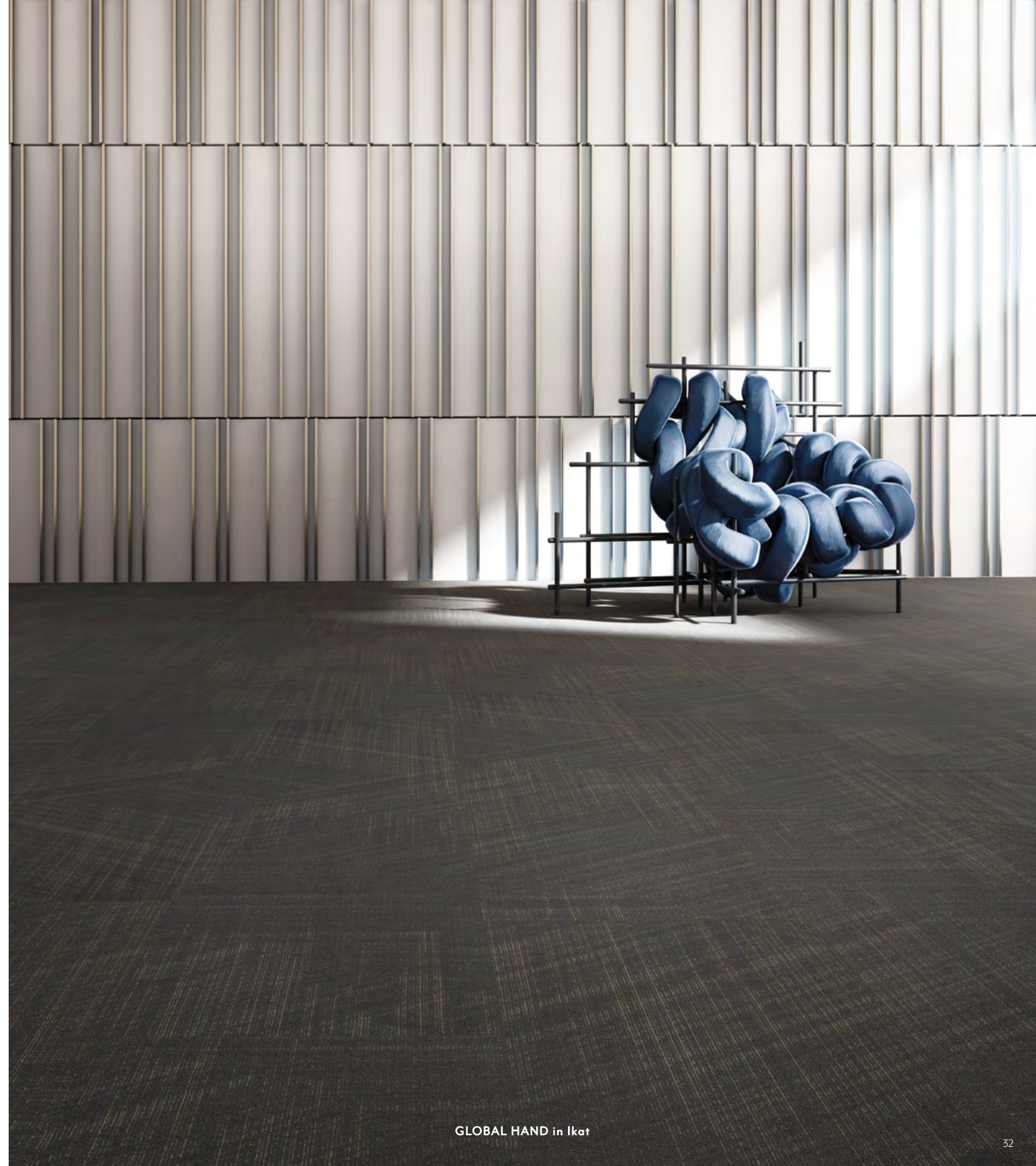
MONOCHROME / SURFACE TONE

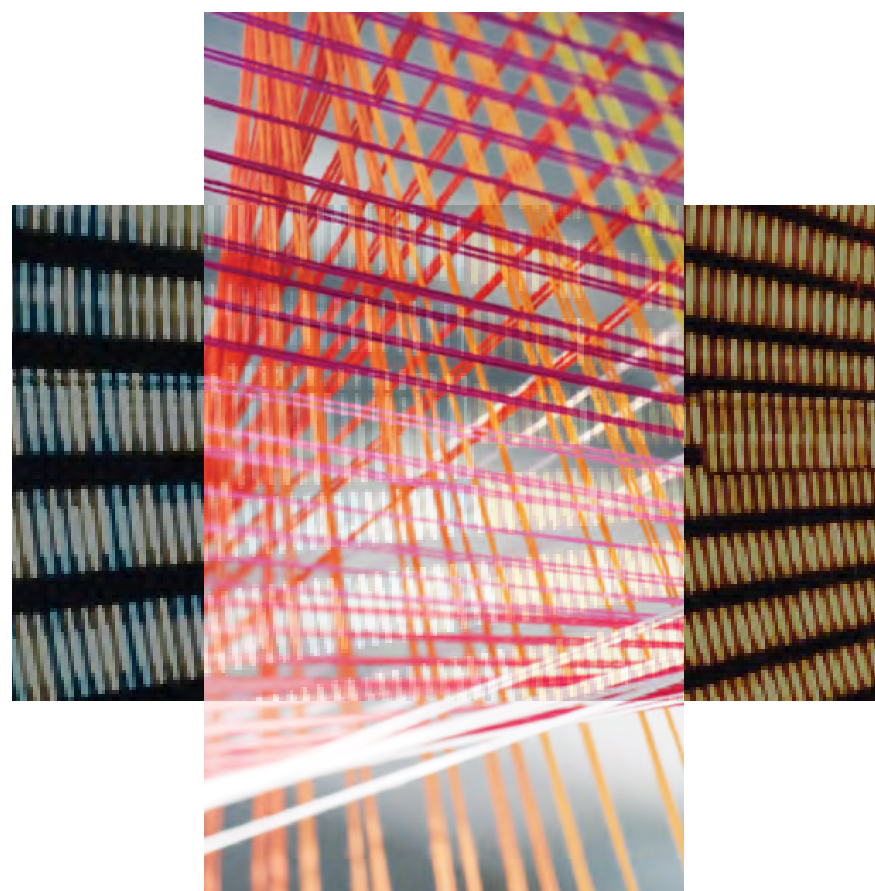


DIGITAL WEAVE



THE ARTISTRY OF INTERLACEMENT EXPERIENCES AN EVOLUTION OF DESIGN IN DIGITAL WEAVE, A COLLECTION THAT REMASTERS ANCIENT TECHNIQUE. STRANDS STRETCHED, VERTICALLY AND ACROSS, DIAGONALLY AND BACK THROUGH. THREE STYLES IN A SPECTRUM OF COLORS EXPRESS A FRESH TAKE ON HAND-LOOMED TEXTURE, PRECISELY TRANSFORMED.



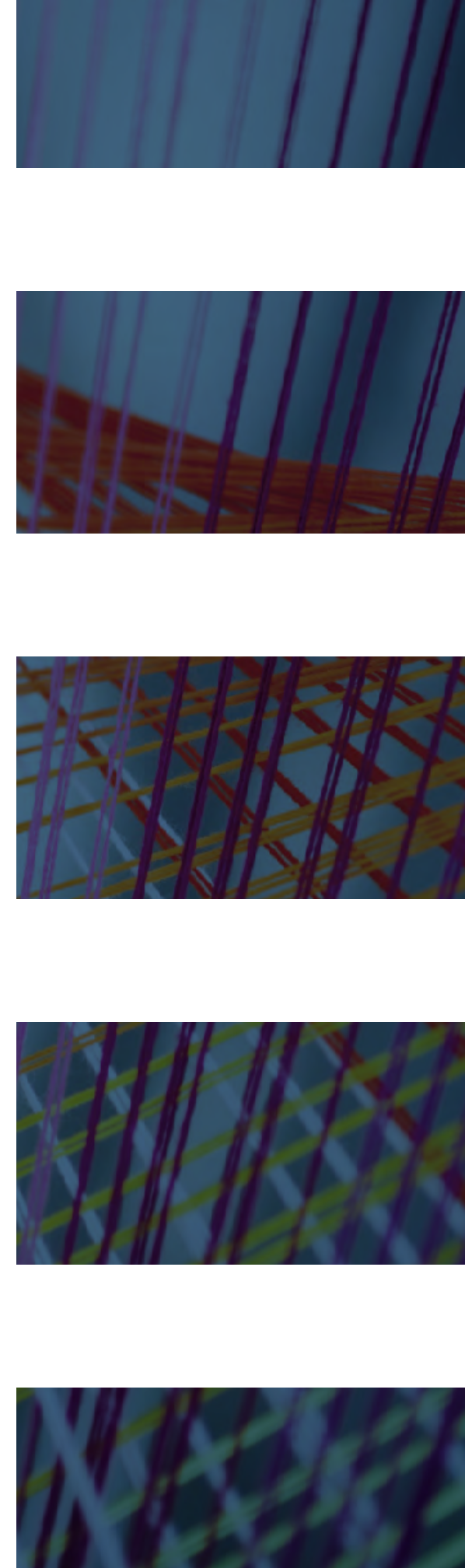


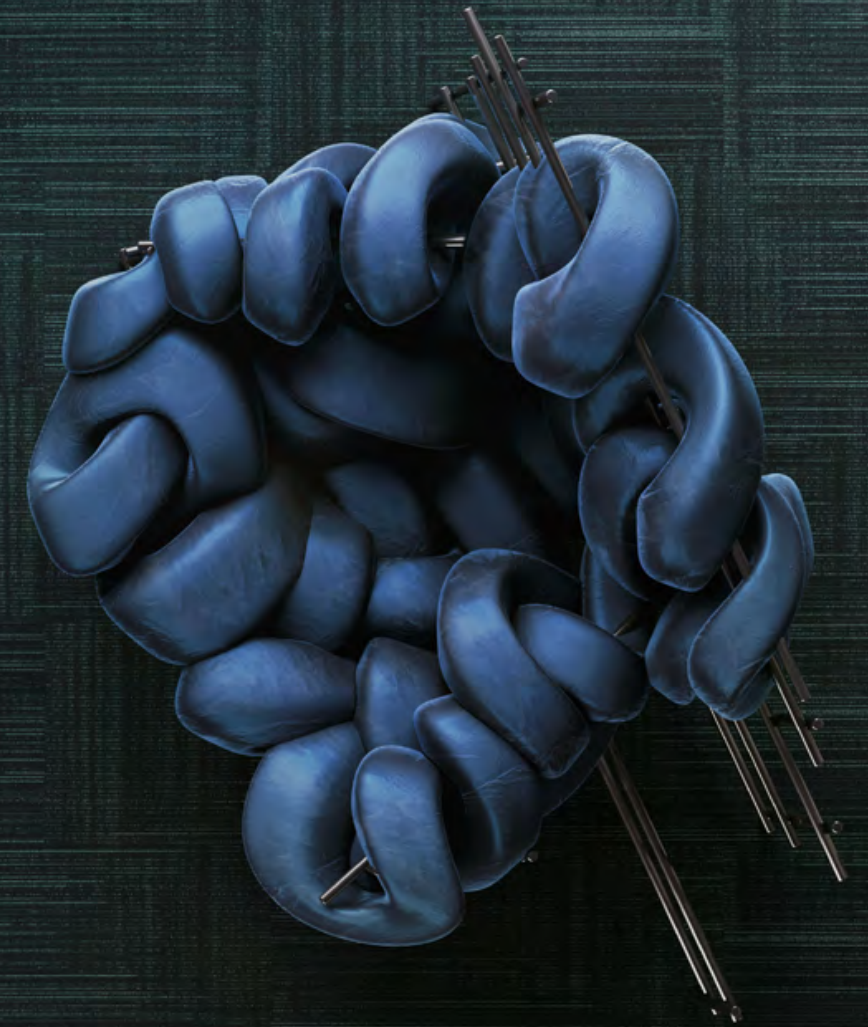
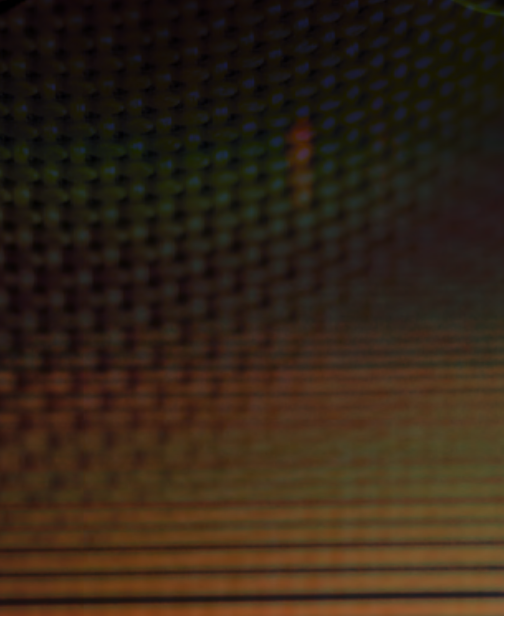
DIGITAL WEAVE

MICRO-WEAVE in ikat



ARTCLOTH in fiber





DIGITAL WEAVE



MICRO-WEAVE in ikat, fiber and homespun

	ARTCLOTH I0505	GLOBAL HAND I0506	MICROWEAVE I0507
canvas 00110			
gauze 00155			
leno 00355			
ikat 00410			
fiber 00450			
homespun 00496			
wefl 00810			
jute 00760			
basket 00750			
cloth 00585			
wicket 00510			
twill 00505			

SPLITWOOD



EMBRACING THE INNATE BEAUTY OF WORN WOOD, NATURAL IMPERFECTIONS BECOME INTENTIONAL DESIGN ELEMENTS. IN SPLITWOOD RESILIENT PLANK, TEXTURAL GROOVES AND CRACKS ARE ENHANCED WITH METALLIC INLAYS OF BRONZE, SILVER AND GOLD. EMBOSSED IN REGISTER FOR REALISTIC GRAINING AND PRECISION PATTERNING, THE NATURAL WOOD VISUAL IS ELEVATED AND ELONGATED WITH DURABILITY INGRAINED.



SPLITWOOD in mocha silver



SPLITWOOD in misted bronze



SPLITWOOD in washed silver, charred silver, weathered bronze and misted bronze



SPLITWOOD in charred silver and mocha silver



SPLITWOOD in ashen gold

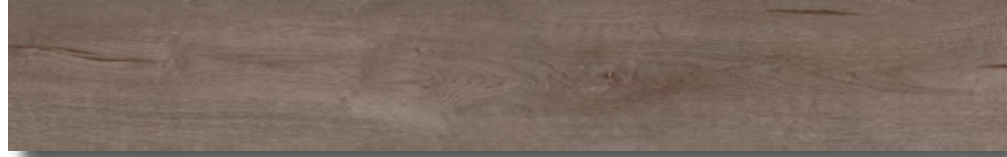
ashen gold
00570



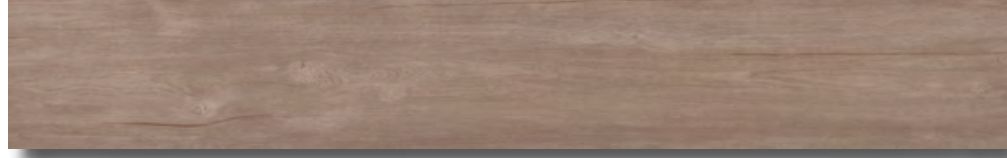
frosted bronze
00550



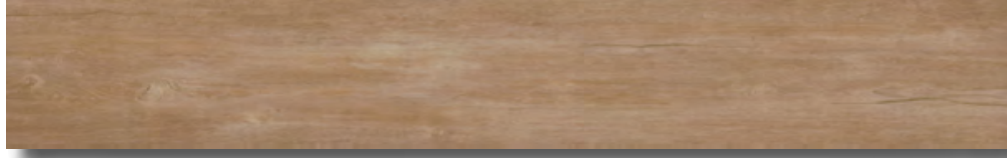
weathered bronze
00540



misted bronze
00500



raw gold
00130



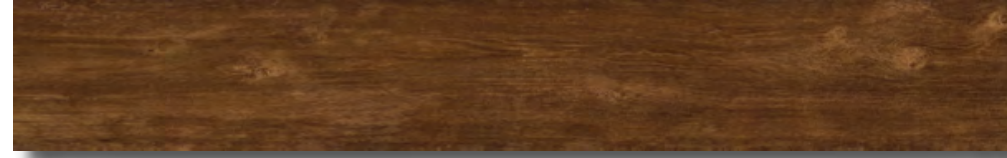
washed silver
00100



mocha silver
00790



tavern bronze
00760



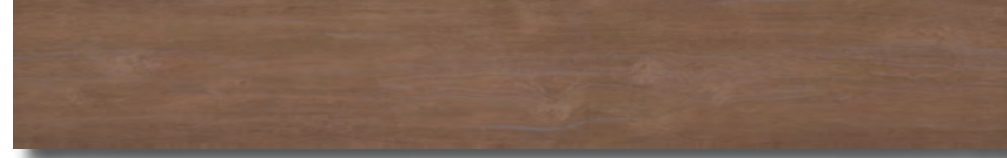
rustic silver
00750



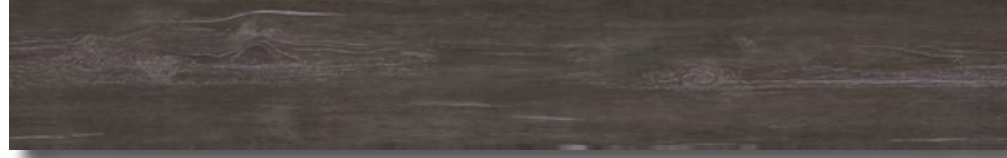
almond gold
00720



toasted silver
00700



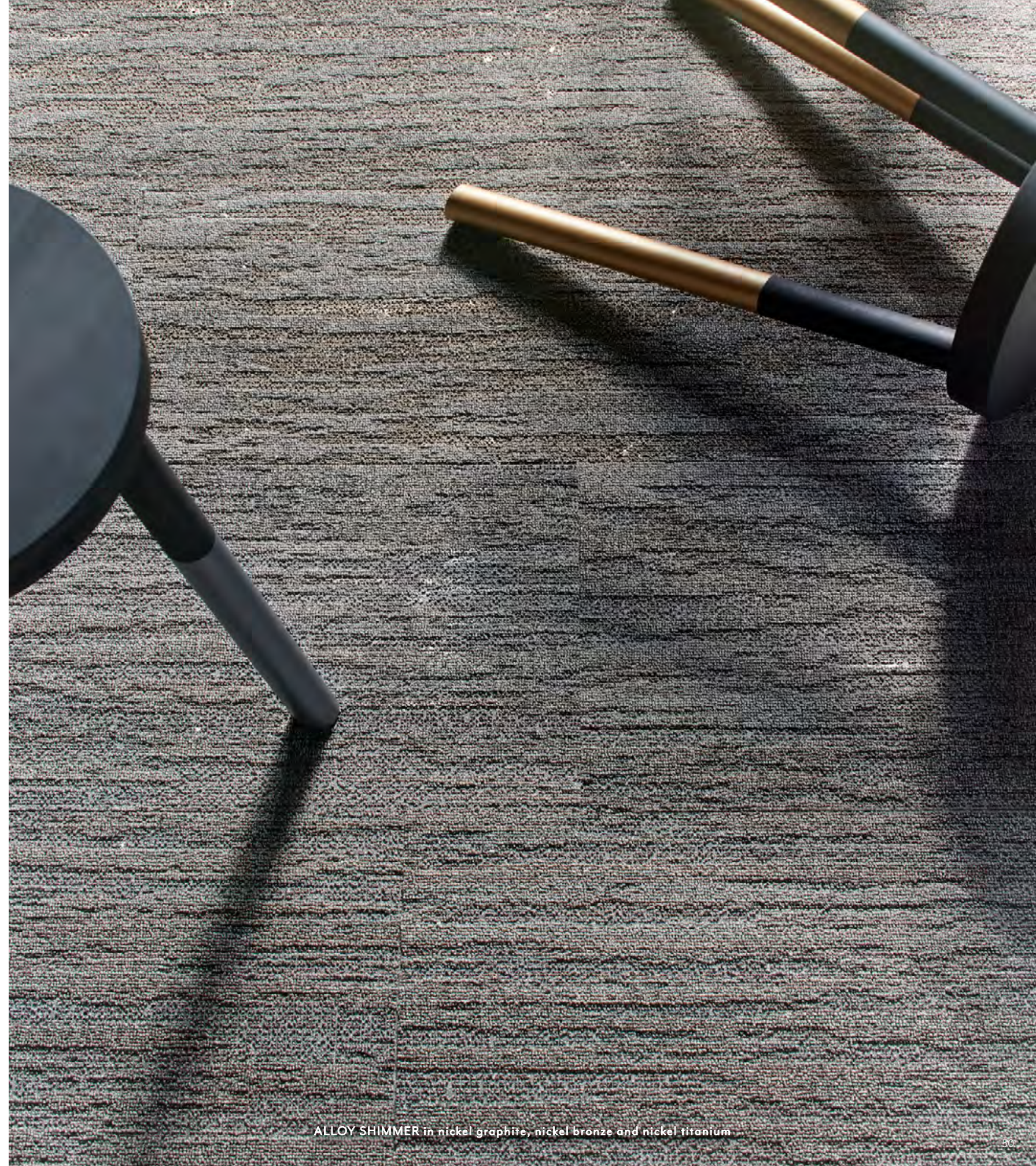
charred silver
00590



DECONSTRUCTED
METAL



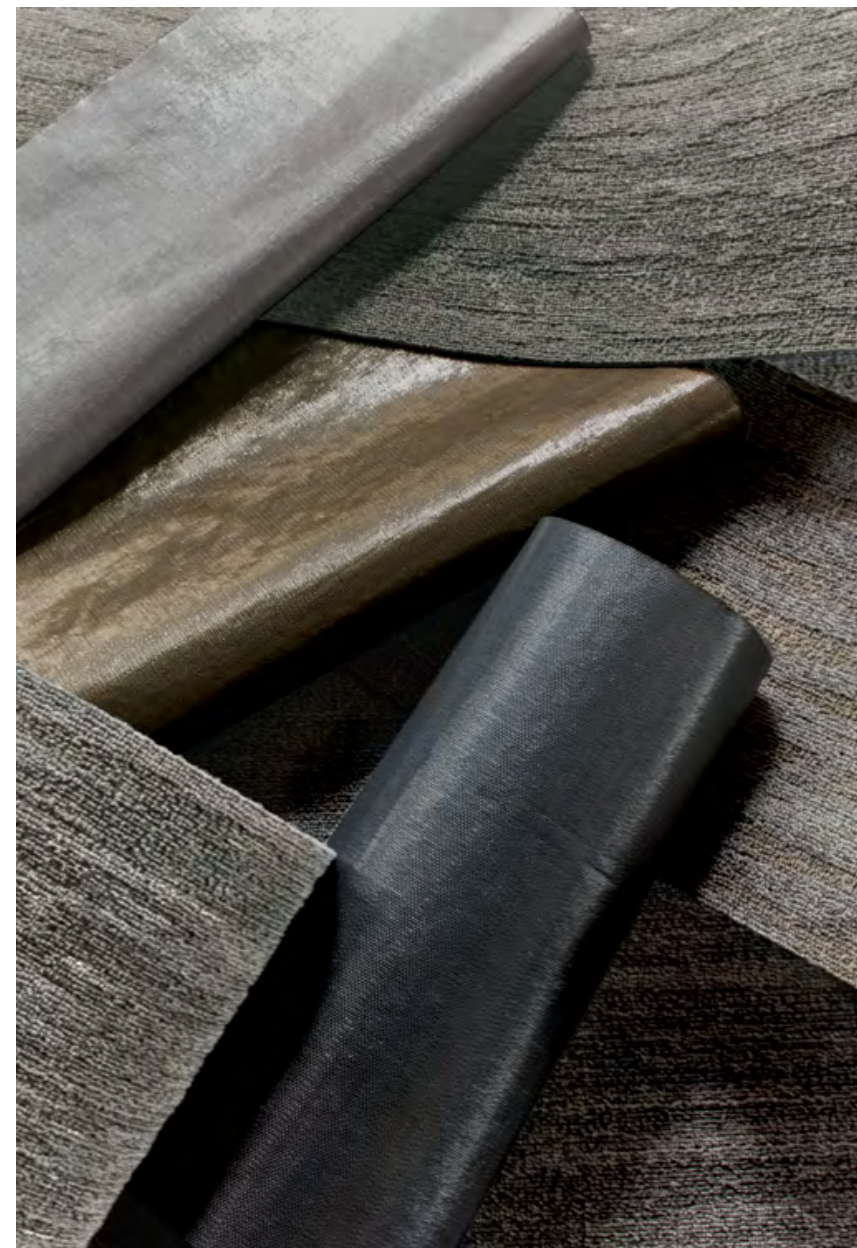
TAKING A STEP BACK FROM TRADITIONAL CARPET CONSTRUCTION, DECONSTRUCTED METAL UNCOVERS NEW DEPTHS, INTENTIONALLY EXPOSING RAW ELEMENTS OF THE CARPET'S BACKING IN LUSTROUS TITANIUM, BRONZE AND GRAPHITE. THE EFFECT ADDS SHIMMERING DIMENSION TO THE DESIGN. INNER WORKINGS, OUT IN THE OPEN.



ALLOY SHIMMER in nickel graphite, nickel bronze and nickel titanium



METALLIC ALCHEMY in nickel graphite





ALLOY SHIMMER in nickel graphite



ALLOY SHIMMER in nickel graphite

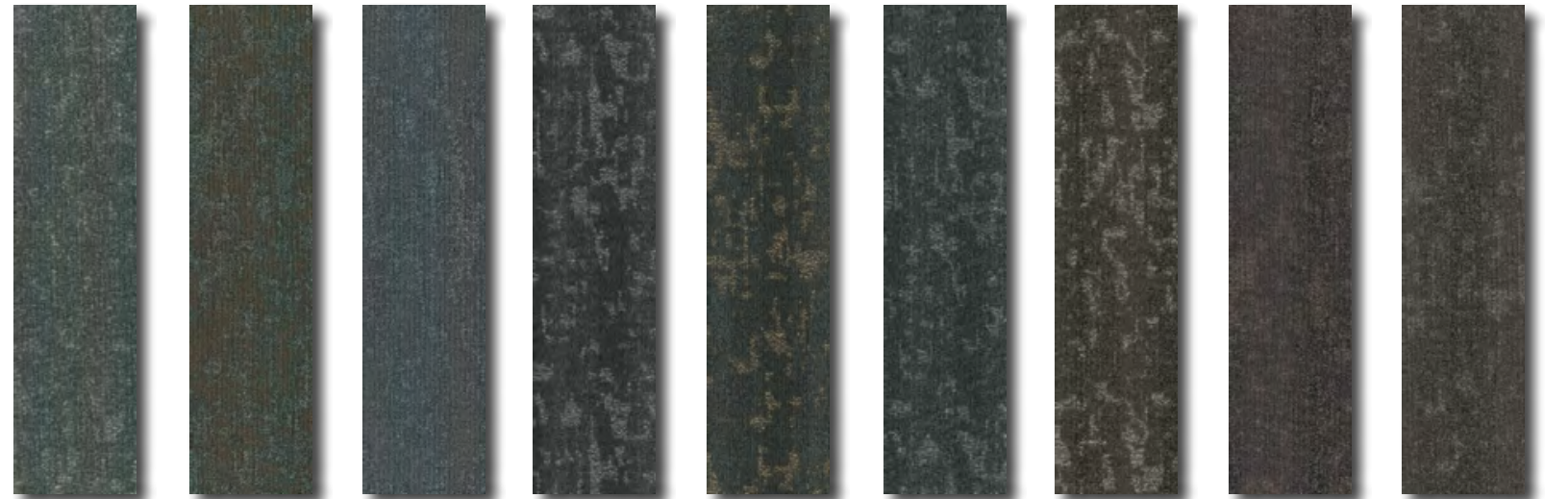
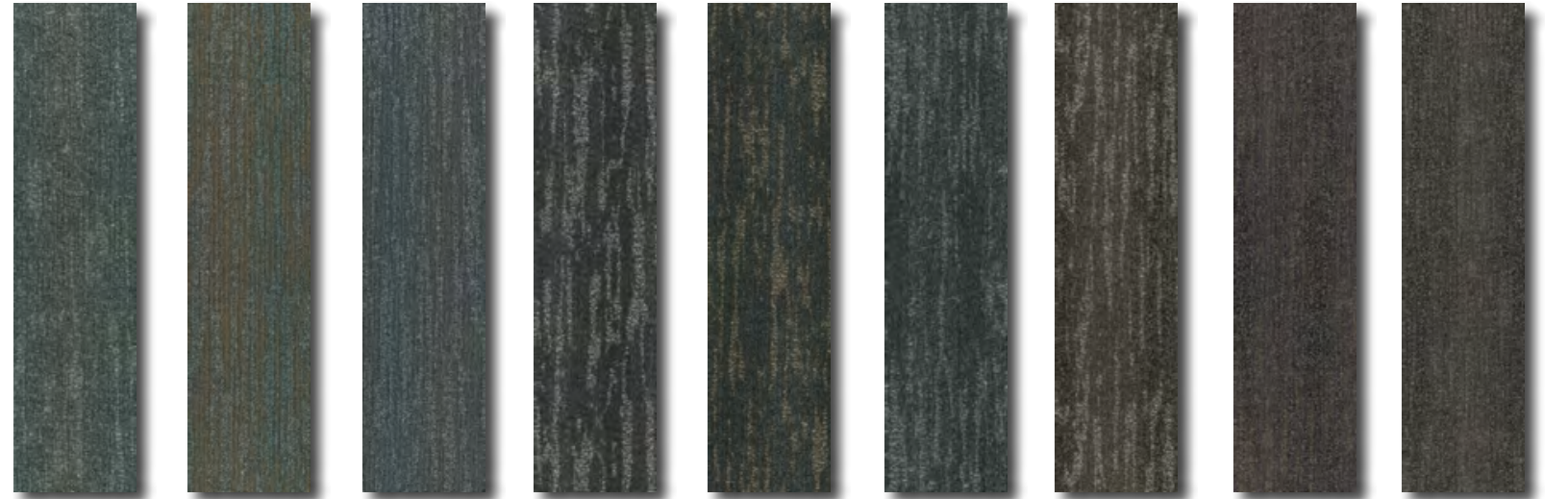
ALLOY SHIMMER 10421



METALLIC ALCHEMY 10422



quartz titanium 00100 quartz bronze 00120 quartz graphite 00150 nickel titanium 00510 nickel bronze 00520 nickel graphite 00530 patina titanium 00540 patina bronze 00550 patina graphite 00560



cobalt titanium 00545 cobalt bronze 00555 cobalt graphite 00565 onyx titanium 00570 onyx bronze 00580 onyx graphite 00590 antique titanium 00770 antique bronze 00780 antique graphite 00790

DECONSTRUCTED METAL

SUBTRACTIVE
LAYERS



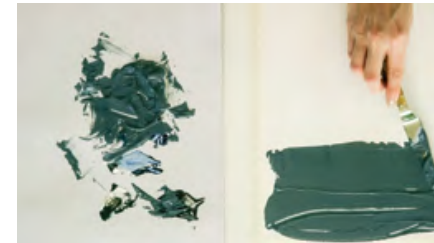
WHEN AN ARTIST USES ABSENCE AS AN INSTRUMENT OF CREATION, ABUNDANT POSSIBILITY IS REVEALED. INSPIRED BY THIS PROCESS OF REMOVING MATERIAL, SUBTRACTIVE LAYERS EXPLORES MINIMALIST GROUND. PAINTS MOVE ACROSS THE CANVAS, GIVING LIFE TO LAYERED, MODERN TEXTURE. STRIATIONS OF CONTRAST CREATE SHIFTS OF COLOR, YIELDING TO THE BEAUTY OF OMISSION.



REMOVE in brilliant blue / WITHDRAW in barely black



WITHDRAW in pure gray, cool gray and barely black / REMOVE in neutral mix, faded indigo and brilliant blue





WITHDRAW in barely black and pure gray

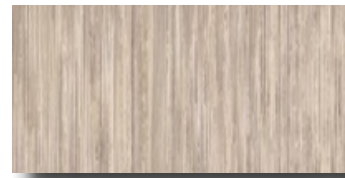


WITHDRAW in barely black and pure gray

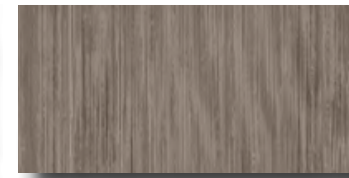


REMOVE in neutral tint

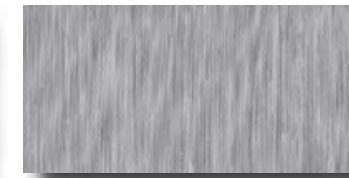
WITHDRAW 1418V



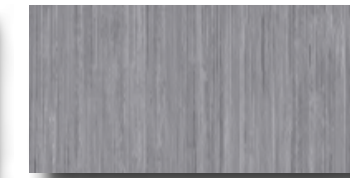
unbleached titanium 00100



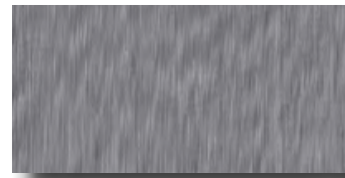
dessert tan 00160



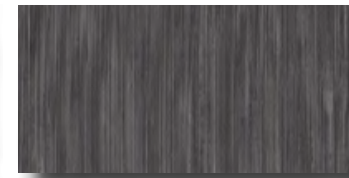
pure gray 00520



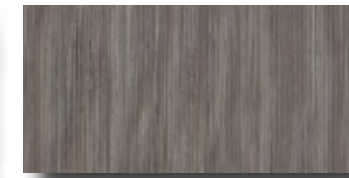
cool gray 00560



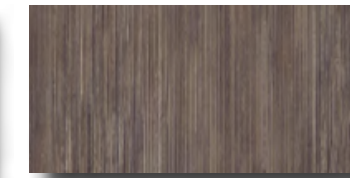
mountain gray 00565



barely black 00580

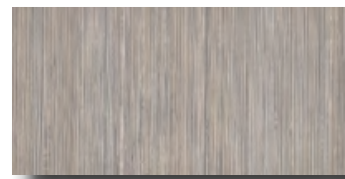


gray brown 00740

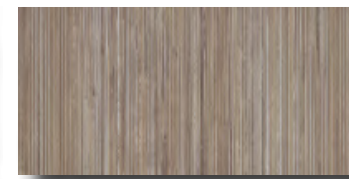


sepia 00760

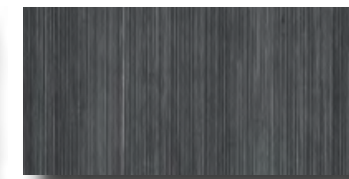
REMOVE 1417V



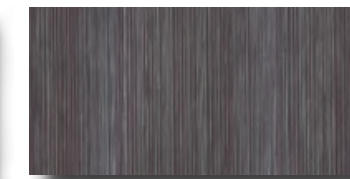
neutral tint 00130



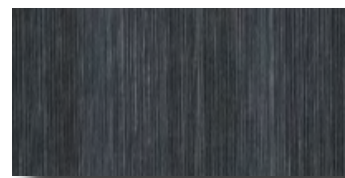
light ochre 00150



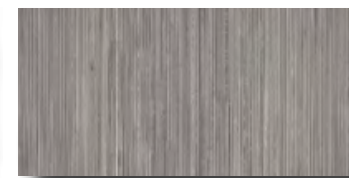
viridian green 00360



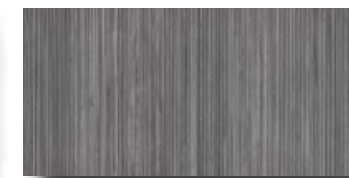
faded indigo 00460



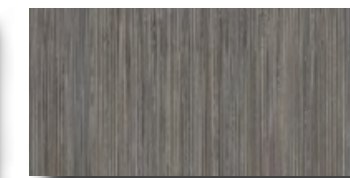
brilliant blue 00490



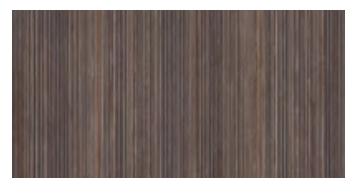
stone gray 00530



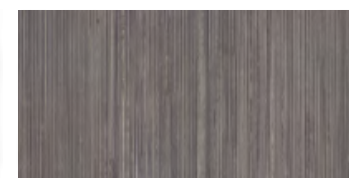
shale gray 00540



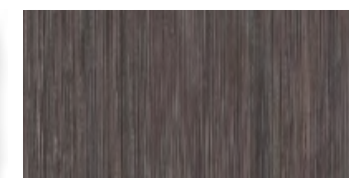
neutral mix 00550



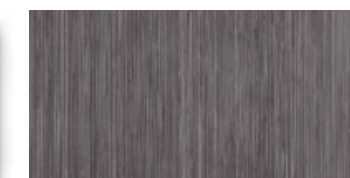
burnt umber 00750



taupe stone 00770



deep taupe 00780



painter's purple 00960

SUBTRACTIVE LAYERS

TIME
EXPOSURES



OPEN TO SUNLIGHT, MATERIALS ARE OXIDIZED AND TRANSFORMED. AGE BECOMES BEAUTY,
THE FUTURE BECOMES THE PRESENT. TIME EXPOSURES BRINGS THIS AUTHENTICITY TO LIGHT,
LOOKING BENEATH, BETWEEN AND BEYOND, CREATING A SURFACE MARKED BY MOMENTS,
NEVER STANDING STILL.





APERTURE in distortion



TIME EXPOSURES





APERTURE in time lapse

SHADOWGRAPH I0393

APERTURE I0394

analog 00100		
bitmap 00120		
distortion 00180		
landscape 00310		
saturation 00450		
time lapse 00500		
portrait 00525		
backlir 00550		
mega pixel 00599		
focus 00700		
digital 00750		
shutter 00800		



TRANSFORM
SPACE

LINKEDIN

DESIGN BY M MOSER ASSOCIATES / NEW YORK, NY



WHEN M MOSER ASSOCIATES TOOK ON THE EXTENSIVE RENOVATION OF THE THIRD STORY OF THE EMPIRE STATE BUILDING FOR LINKEDIN'S NEW OFFICE SPACE, THEY FACED SIGNIFICANT FLOORING CHALLENGES. DIRECTLY BELOW THE SPACE IS THE FAMED DOUBLE HEIGHT LOBBY ENTRANCE WITH A LANDMARKED GOLD LEAF CEILING. WITH THE AREA ABOVE DESIGNATED AS A NO-FLY ZONE, THE ORIGINAL FLOOR NEEDED TO REMAIN INTACT. THE DESIGNERS ELEVATED THE FLOOR AND CHOSE MIXED MATERIALS' PLANX LVT TO SOLVE THIS CHALLENGE AND PLAY UP THE HISTORIC GLAMOUR OF THE BUILDING.



“WE CHOSE VERY TACTILE MATERIALS THAT WE COULD USE TO REPRESENT THE BUILDING’S HISTORY. WE FUSED THESE ELEMENTS WITH A MORE MODERN ARCHITECTURAL APPROACH ELSEWHERE TO CREATE A WARM, SHARED SPACE THAT MAKES PEOPLE FEEL GOOD AND INCREASES PRODUCTIVITY FOR THE CLIENT.”

Charlton Hutton / Senior Associate and Designer, M Moser

Spanning half a city block, the multi-use spaces inspire a feeling of community for daily staff and visitors of the world’s largest professional networking company—right down to the game room equipped with an oversized chess set.



FEATURED PRODUCTS:

(pictured left and previous pages) Mixed Materials Facet in wood planx and metallix
 (pictured above) Color Your World modular in color contrast and color hues



THIEL & THIEL HEADQUARTERS

DESIGN BY THIEL & THIEL / COLLEYVILLE, TX



INTERIOR DESIGN FIRM THIEL & THIEL TRANSFORMED A DARK AND CHOPPY PHOTOGRAPHY STUDIO INTO A CREATIVE AND INSPIRING SPACE FOR ITS DESIGNERS. THE TEAM CREATED VISUAL IMPACT IN THIS OPEN, FLEXIBLE FLOOR PLAN THROUGH THE SEAMLESS TRANSITION OF PATTERNS, NEUTRAL SHADES, AND TEXTURES.



"WE WANTED FLOORING THAT WOULD TRANSITION FROM SPACE TO SPACE WITHOUT CREATING ANY VISUAL BOUNDARIES."

Paige Byrd / Partner and Interior Design Director, Thiel & Thiel



Removing old ceramic tile and broadloom, designers installed a vivid combination of carpet tile and luxury vinyl tile in clean, modern neutral tones of gray, black, and white.

FEATURED PRODUCTS:
Mixed Materials Planx in tungsten, pewter and alloy /
Optix Facet color pinstripe





D I S C O V E R
E X P L O R E
I N S P I R E
I M A G I N E
C O N S T R U C T
C R E A T E
D E S I G N
I N V E N T
T R A N S F O R M

