





INSPIRE.  
CREATE.  
TRANSFORM  
COLOR.

Color can set a tone. Create a mood. Evoke a feeling. It is elemental. Material. Dimensional. We use color to reset the state of things – and our state of mind. But color can also transform. Exploring the duality of tonal contrast – the path of color through texture and form – we can uncover inspiration in the unexpected. Curiosity in the found. Comfort in the collected. Let's study color in its many dimensions – the bold, the emotive. The color-filled connections that draw us in.

IN THIS ISSUE



04

CURIOSITY OF COLOR /  
A STUDY OF  
THE TRANSFORMATIVE  
NATURE OF COLOR



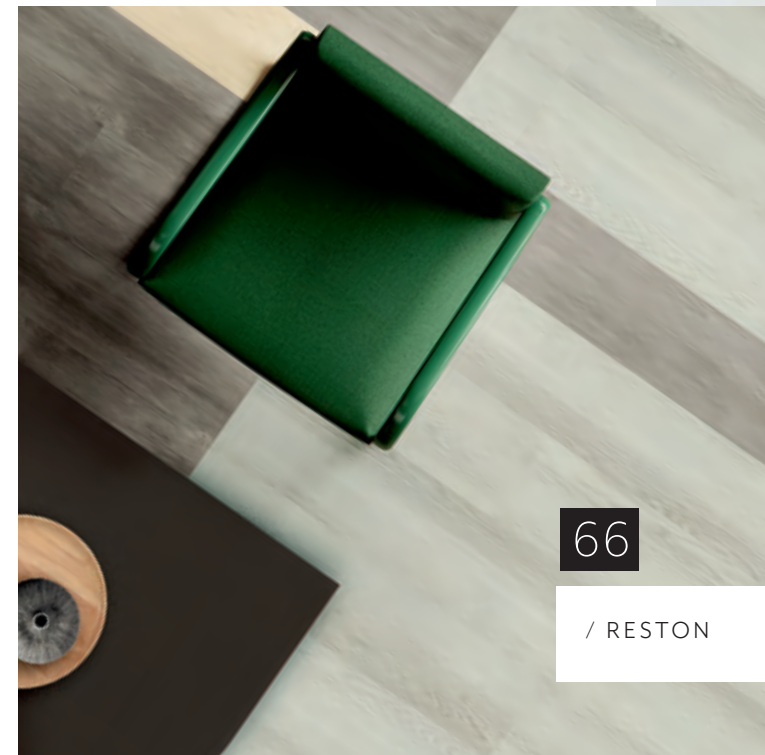
24

/ STATES OF WATER



46

/ TEXTILE TECHNIQUE



66

/ RESTON



82

/ TIMBER GROVE II

# CURIOSITY OF COLOR

Transforming the fundamental. Flipping the elemental. Color seen through the lens of found objects. Described by its connection to form. Evoked from emotion and sensory experience. Using texture, material and dimension for color that's fresh + new. Finding the unexpected in the expected to create the colors of the moment. Embrace the curiosity of color.

curio /  
 an unusual article or object  
 of art, valued as a curiosity.

*I spy a red onion, a coil of copper, some Himalayan pink salt. What do you spy?  
 In warm umber tones + natural earthen hues, curios common and rare scatter the page  
 – a peek inside our curious collectables. Inspired by the everyday, the lost + found,  
 uncover the materiality of color. A sensorial journey through texture and contour.*





objet trouvé /  
 an object found or picked  
 up at random, considered  
 aesthetically pleasing.

*It's a leaf, a pencil, a spool of velvet trim. Seek + find for color that transitions through material and matter for tonal perception. Objects unique to the seeker, palettes created to inspire. Color is collective. Emotive. Personal. Unexpected. Color is curious.*

“We look at color from every angle. Exploring found materials and objects, studying how color changes through texture and form. We’re all drawn to varying shades of color – connecting to the different emotions and feelings that they can evoke. It’s a personal color study for an inspired collective output.”

## A STUDY IN FOUND OBJECTS

To truly study the transformative nature of color, we brought it back to the basics. We collected and coordinated found items big and small, artful and ordinary. An egg. A honeycomb. An old cell phone. Even a container of pink eraser shavings. We put them together with swatches and samples, studying how the color evolved organically and graphically. Looking at color through the lens of found objects, we saw something in the unexpected. Here are our palettes of the moment.



CURIOSITY OF COLOR





Binary in citron gray / Vinings in favorite gray / paint by Benjamin Moore in Lemon Freeze 2025-50

color study / no. 1

# enveloping

A STUDY OF COLOR AND EMOTION. ENVELOPING COMBINES THE WARMTH OF BRIGHT HUES AND THE COMFORT OF SOOTHING TEXTURES. A PALETTE THAT CAN ENERGIZE AND ILLUMINATE FOR POSITIVE IMPACT, ENHANCING CONNECTIVITY. IT IS EMOTIVE AND JOYFUL, CURATED TO ENLIVEN THE SPACES THAT SURROUND US. WE BASK IN ITS COMFORTING GLOW.

# retrospective

A STUDY OF COLOR AND TEXTURE. WHAT'S OLD IS NEW. EMBRACING THE BOLD SATURATION OF CHARCOAL AND CARBON, RETROSPECTIVE EXPLORES THE DUALITY OF CONTRAST. APPLYING TEXTURE AND DEPTH SOFTENS THE PALETTE, TRANSFORMING SPACE THROUGH LIGHT AND SHADOW. IMPRINTING. MARK MAKING. CARBON DATING. WE TAKE A LOOK BACK TO DESIGN FORWARD.



Colour Effect in black /  
Mark Making in silhouette /  
Irregular in yin / Linocut in  
inked / paint by Benjamin  
Moore in Wrought Iron  
2124-10

## earthen

A STUDY OF COLOR AND THE ELEMENTS. EARTHEN IS OUR BIOPHILIC PALETTE OF THE MOMENT. WITH SUNSET LADEN HUES, SHADES OF SUNBAKED TERRACOTTA AND EARTHLY DESERT TONES, COLORS COALESCE FOR PEACEFUL VIBES. INSPIRED BY TEXTURES ROOTED IN ORGANIC ELEMENTS, EARTHEN IS OUR GO-TO PALETTE FOR CALMING SPACES.



*Vaporous in ebb / Timber Grove II in coral / paint by Benjamin Moore in Fox Run 1229*

# bountiful

A STUDY OF COLOR AND MATERIALITY. EARTHEN'S DISTANT RELATIVE, BOUNTIFUL BLENDS INSPIRATION FROM BIOPHILIC AND ADAPTOGENIC PHILOSOPHIES FOR BALANCE AND SERENITY. SATURATED PIGMENTS IN OCHER AND SAGE MERGE WITH MUTED TONES IN ECRU AND SAND. A PALETTE DESIGNED TO NURTURE MINDFULNESS AND ENHANCE WELLBEING, BOUNTIFUL EXUDES AN EMPOWERING PRESENCE.



*Timber Grove II in merigold /  
Glacial Ice in flow / Wooden Warp in  
harness / paint by Benjamin Moore in  
Golden Bounty 294*

# drifting

A STUDY OF COLOR AND FEELING. WITH SOFT TONAL SHADES OF SOOTHING NEUTRAL HUES, DRIFTING TRANSFORMS THROUGH TEXTURE AND FORM. IT IS CALMING. PRESENT. MINDFUL. FAMILIAR. ZEN. A PALETTE CURATED FOR TRANQUIL SPACES, DRIFTING EMBODIES A COMFORTING AURA. MUSING. PENSIVE. THOUGHTFUL. DREAMY. LET'S GET CARRIED AWAY.



*Oxidized in ore / Vaporous in haze /  
Linocut in relief / paint by Benjamin  
Moore in Ashen Tan 996*

## STATES OF WATER

IN MOVEMENT, STILLNESS AND SHIFTING FORMS, STATES OF WATER IS AN EXPLORATION OF TRANSFORMATIVE COLOR AND SWEEPING GRADATION. CONNECTED TO THE TIDES. THE CRASHING WAVES. THE WANING CURRENTS. THE SCULPTURAL QUIETUDE IN SOLID FORM. STATES OF WATER IS TEXTURE AND PATTERN AWASH THAT CREATES A SENSORIAL EXPERIENCE. COLOR SHIFTS AND FADES. EBBS AND FLOWS. RISES AND FALLS. FOR DEPTH, MOTION, DIMENSION.

GLACIAL ICE in laguna / installed brick

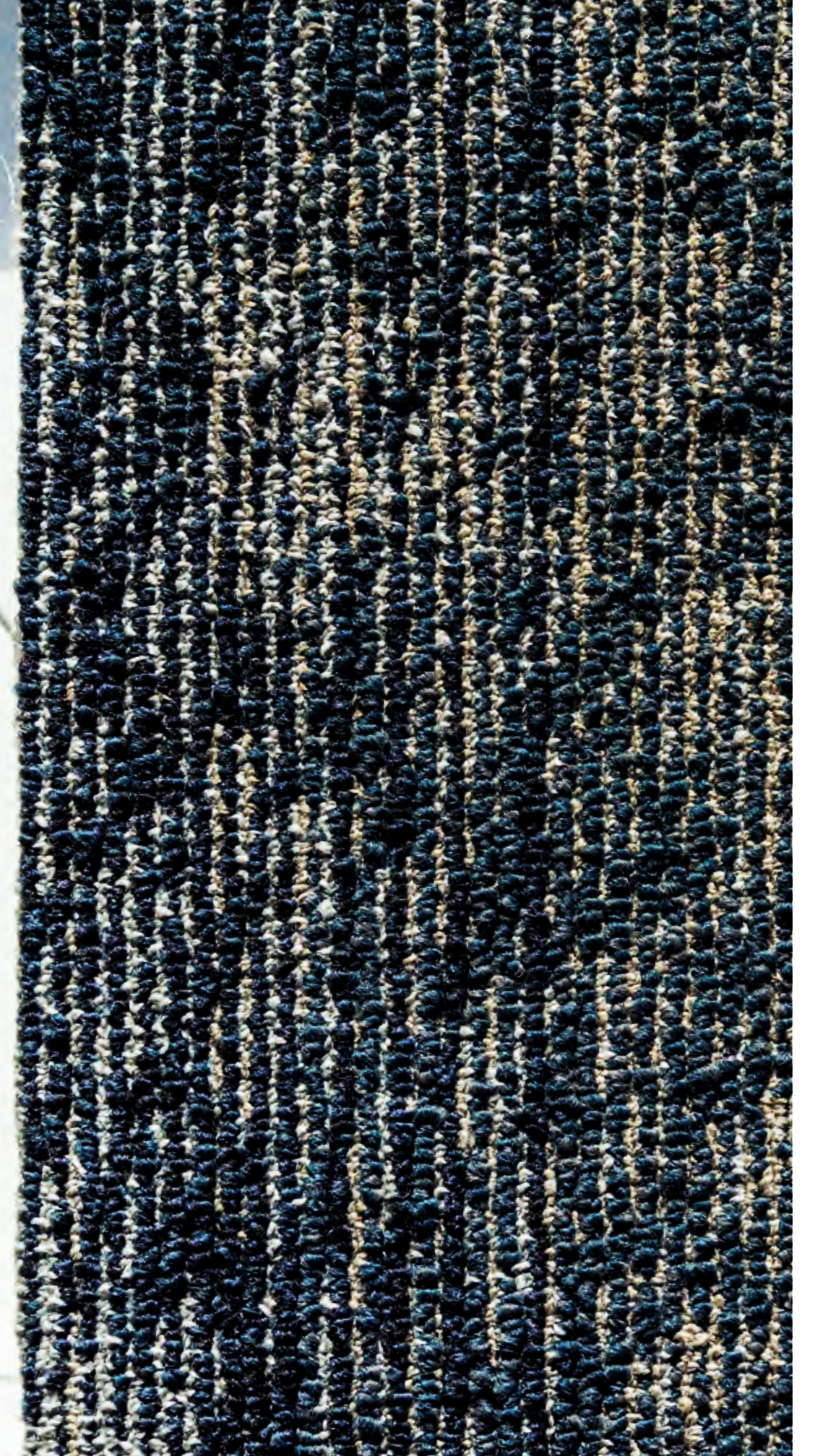


“WATER IN ITS VARIOUS STATES CREATES COLOR IN INTERESTING WAYS. I WAS PARTICULARLY CURIOUS ABOUT THE FORMATIONS OF THE GLACIERS IN GREENLAND – DRAWN TO THEIR CURVATURE AND DRAMATIC HUES.”

**ASHLEY WEAVER** /  
PRODUCT DESIGNER

**VIVID HUES +  
NEUTRAL  
UNDERCURRENTS**

Inspired by beautiful imagery of water in its different forms – solid, liquid and vapor — Ashley studied water’s dramatic movements, depth and color shifts. Using a rich blend of colors within the yarn, Ashley worked closely with manufacturing to replicate the patterning, color and scale of these three states of water.





GLACIAL ICE in cloud / installed brick





TIDAL in Laguna / installed monolithic





VAPOROUS in cloud / installed quarter-turn



VAPOROUS in cloud, laguna and ink / installed brick



GLACIAL ICE, VAPOROUS and TIDAL in laguna / installed brick



TIDAL in cloud and flow / installed brick



TIDAL and GLACIAL ICE in dew / installed monolithic and quarter-turn



Teal Ocean  
2049-30

wall color by Benjamin Moore



GLACIAL ICE in dew / installed brick



COLLECTION

24 X 24 TILE | **GLACIAL ICE** 10577 / **TIDAL** 10578 / **VAPOROUS** 10579



haze 00730



dew 00350



flow 00250



frost 00510



cloud 00530



logunc 00450



ebb 00850



ink 00590



fog 00550



deep 00490



mist 00950

STATES OF WATER



## TEXTILE TECHNIQUE

RETROSPECTIVE ARTISTRY INSPIRES WOVEN TEXTURE. DESIGNED FOR COMFORT + CONNECTION. FOR EXPERIENTIAL SPACES. BLENDING COLOR AND TACTILITY IN PAIRS FOR A DYNAMIC DESIGN DUO. EXPLORING THE VISUAL OF THE HANDWOVEN. COZY NEUTRALS INFUSED WITH COLOR FOR MOVEMENT. INSPIRED BY TEXTURE FOR FAMILIARITY. CREATE WARMTH. DEFINE SPACE. ENHANCE CONNECTION. SETTLE IN.



“VISUAL AND TACTILE  
TEXTURE IS KEY TO  
CREATING A SPACE  
THAT FEELS SOOTHING,  
COMFORTING AND  
WELCOMING – EVOKING  
A SENSE OF SETTLING IN.”

**RON POWELL** /  
SENIOR PRODUCT DESIGNER

**CRAVING COZY /  
HAND WOVEN  
TEXTURES CREATE  
A SENSORY CONNECTION**

With inspiration derived from the artistry of macramé and woven fabric design, Textile Technique incorporates a nubby, textural pattern for comforting spaces. Saturated hues are paired with rich neutrals for balance throughout a beautiful range of colors.





INTERLOCK in canvas / installed herringbone



Lemon Freeze  
2025-50  
wall color by Benjamin Moore





SELVAGE in line rose and linen / installed stagger



SELVAGE in linen rose



INTERLOCK in satin and SELVAGE in satin lemon / installed stagger and herringbone



INTERLOCK in satin, canvas and flannel / installed monolithic



SELVAGE and INTERLOCK in flannel / installed stagger





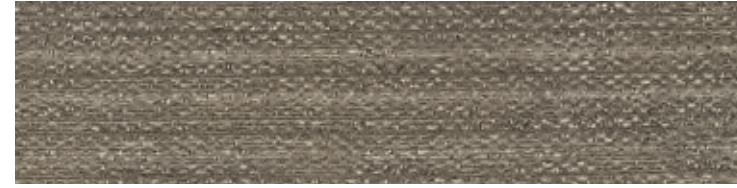
INTERLOCK in satin, canvas and flannel



INTERLOCK in flannel



12 X 48 TILE | SELVAGE 10584 / INTERLOCK 10583



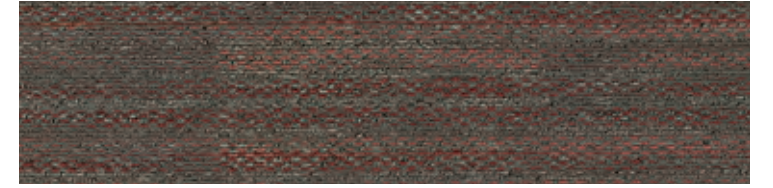
suede 00100



suede bronze 00101



linen 00150



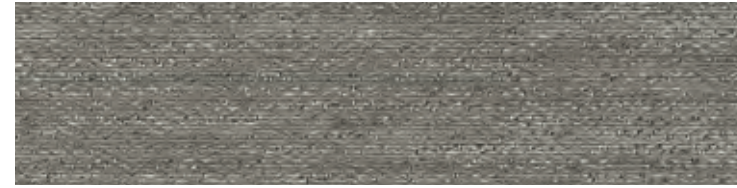
linen rose 00151



denim 00450



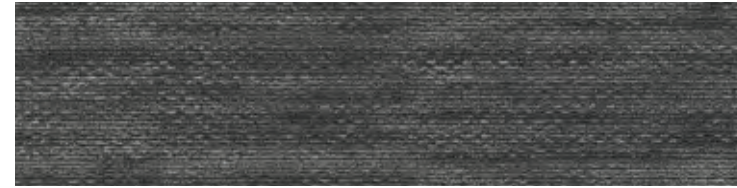
denim blue 00451



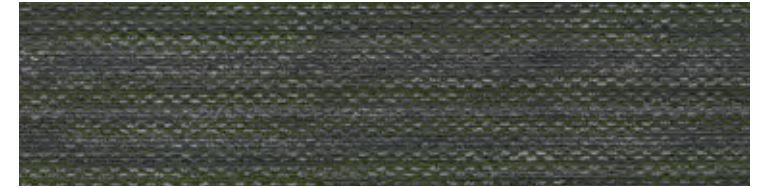
satin 00500



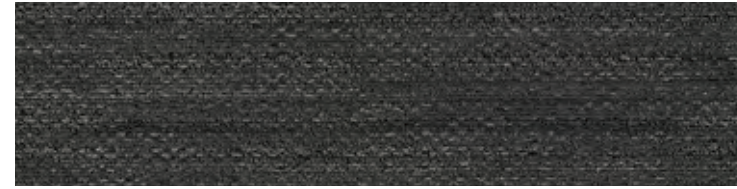
satin lemon 00501



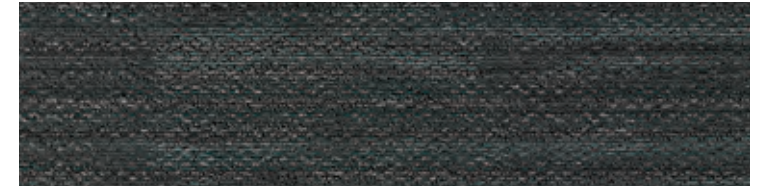
canvas 00550



canvas green 00551



flannel 00575



flannel azure 00576

RESTON

NATURAL WOOD TONE VISUALS FOR TIMELESS DESIGN. EMBOSSED-IN-REGISTER FOR TEXTURE AND DETAIL. VERSATILE COLORWAYS RANGING FROM LIGHT NATURAL TONES TO WARM TAUPES TO RICH CHARCOAL FOR FLEXIBILITY AND STYLE. ELEVATE SPACE WITH ATTENTION TO DETAIL. TRANSFORMING EXPERIENCE.



RESTON in jute and carob / installed herringbone

# RESPITE + RELIEF

*The desire and need for realistic wood visuals continues to be a cornerstone element of design. Expanding on the success of products like our collections Splitwood, Metal Collective and Inset, Reston is an embossed-in-register resilient plank that offers these natural visuals and details without the metallic accents, providing the perfect foundation for any space.*



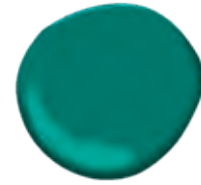
COLLECTION



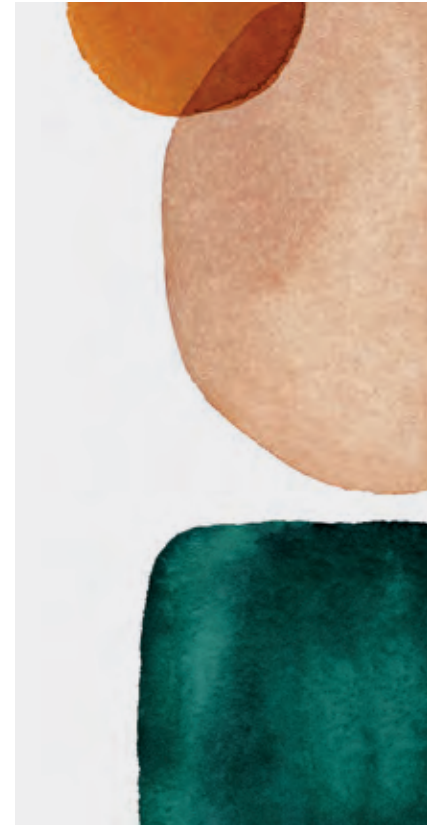
AVAILABLE IN A 7" x 48" PLANK AND 12 COLORWAYS, RESTON IS OFFERED IN COLORS RANGING FROM FRESH LIGHT TONES TO WARMING TAUPES AND RICH CHARCOAL.



RESTON



Juniper  
2048-20  
wall color by Benjamin Moore



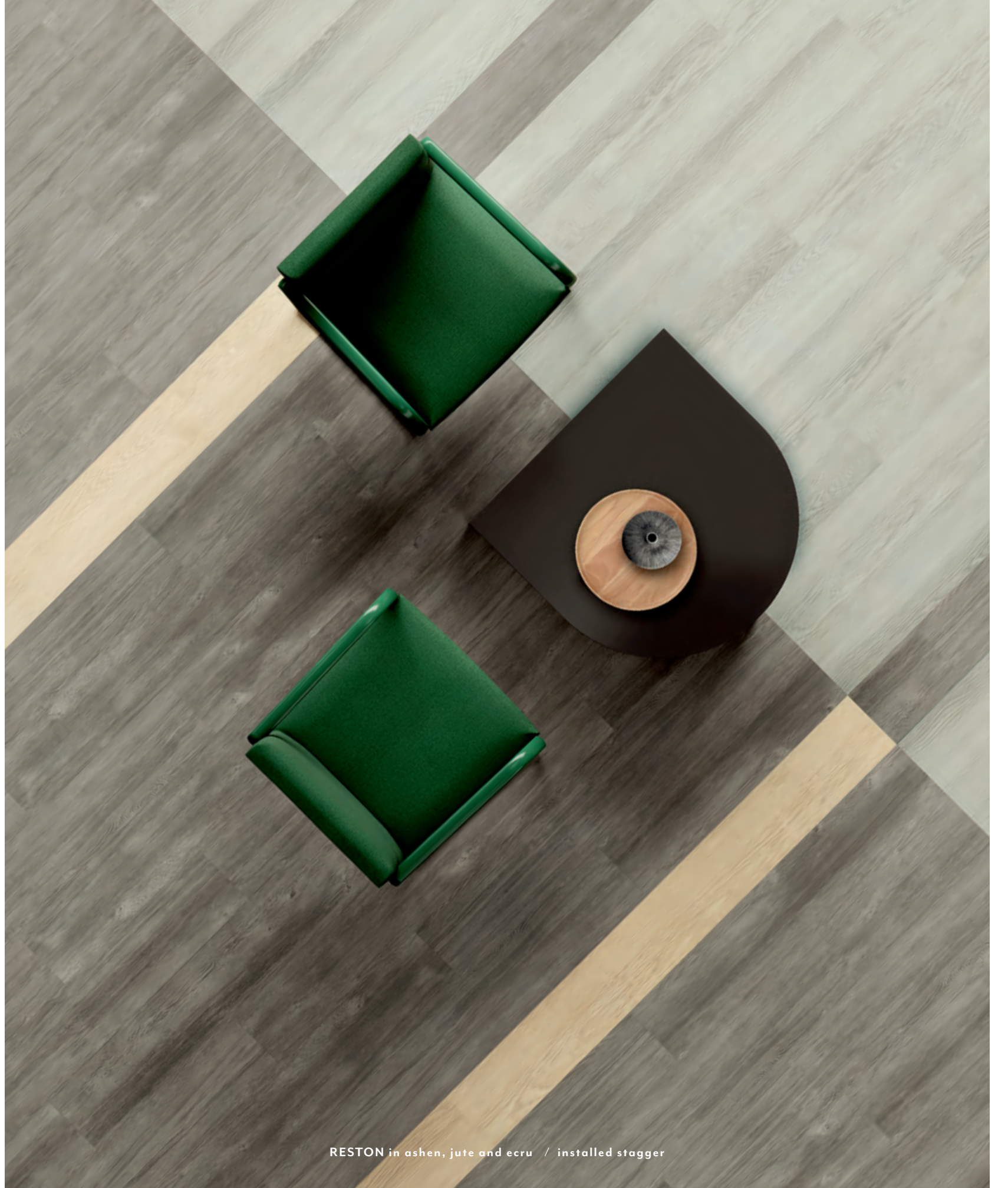


RESTON in carob and ashen / installed stagger



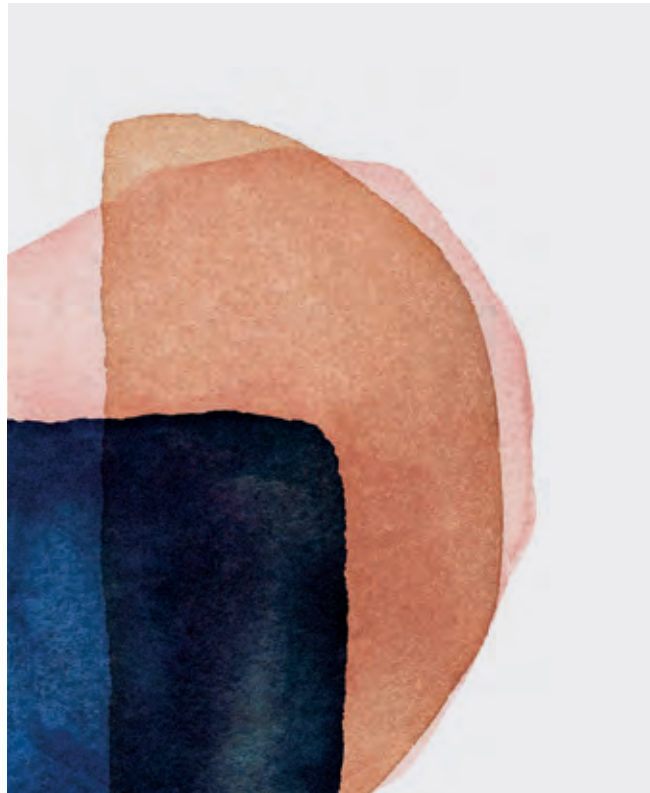
RESTON in ashen, carob, jute and ecru / installed monolithic





RESTON in ashen, jute and ecru / installed stagger





Heirloom  
023  
wall color by Benjamin Moore



RESTON in jute and carob / installed herringbone



RESTON in ash, carob, jute and ecru / installed stagger

7 X 48 LVT | RESTON | 1592V



jute 00710



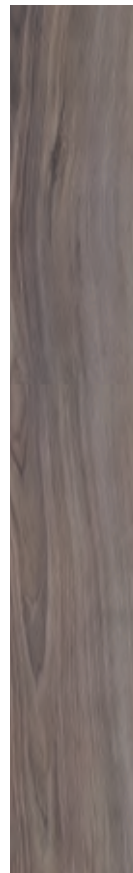
edam 00720



anise 00730



ermine 00740



carob 00760



lumber 00780



ecru 00110



gull 00520



pika 00540



fife 00550



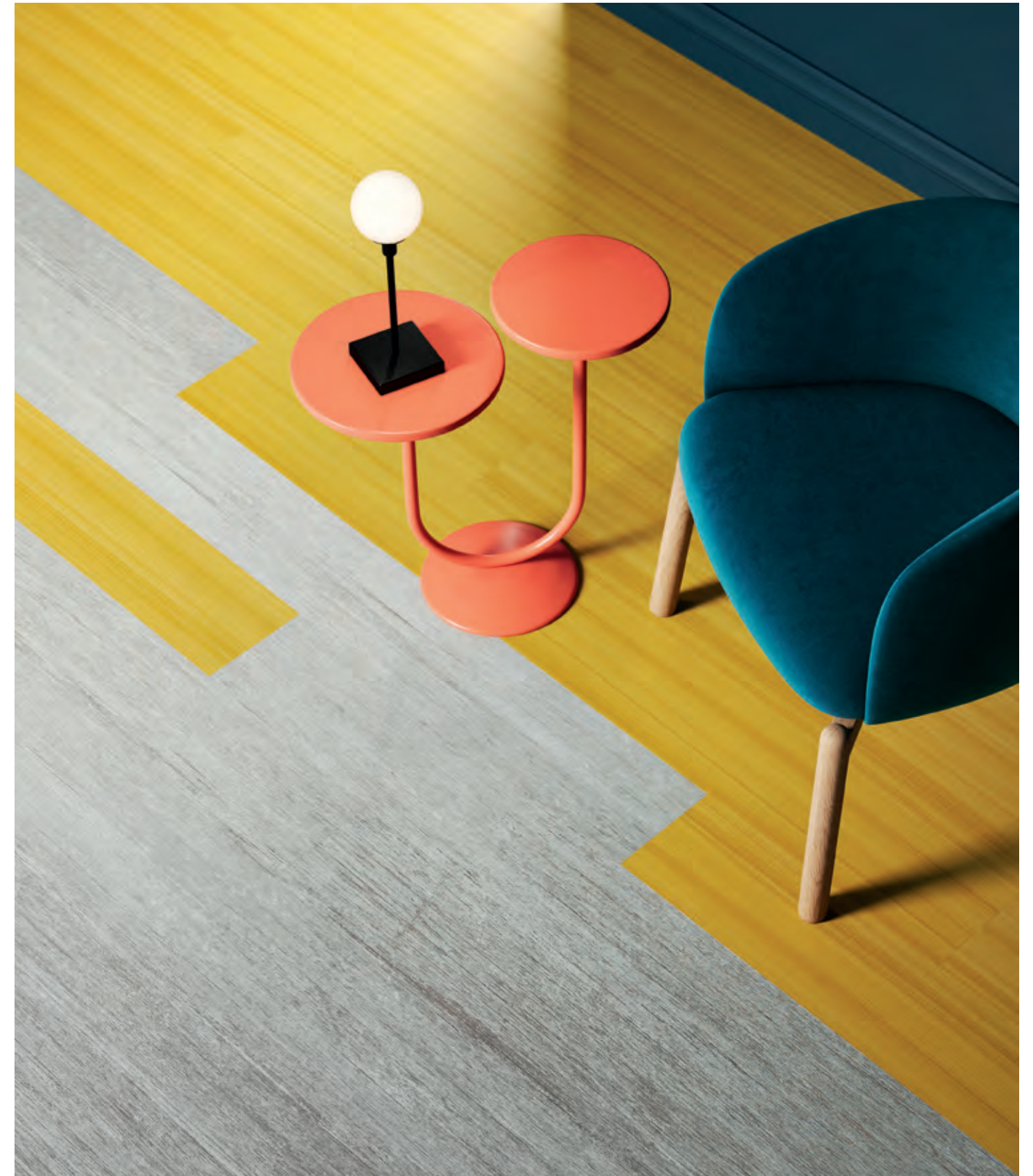
ashen 00580



noir 00590

TIMBER GROVE II  
IN COLOR

ONE OF OUR MOST POPULAR STYLES UPDATED IN COLOR. TAKING A TIMELESS CLASSIC TO THE NEXT LEVEL. WITH THE ADDITION OF SATURATED TONES AND PIGMENTED BRIGHTS, WE'RE MIXING IT UP. A HIGH-PERFORMING PRODUCT FOR COLOR FORWARD DESIGN. FOR BRANDING. WAYFINDING. DEFINING SPACE. MADE IN THE USA WITH AN EXOGUARD+ TOPCOAT FOR PERFORMANCE AGAINST SCUFS AND SCRATCHES. FOR DURABILITY AND FLEXIBILITY TO MEET THE RIGHT NEEDS OF YOUR SPACE. ADD A POP OF COLOR FOR EMOTION + ENERGY. TRANSFORMING DESIGN THROUGH THE CURIOSITY OF COLOR.



TIMBER GROVE II in juniper and merigold / installed stagger



TIMBER GROVE II in caribe, indigo, merigold and juniper / installed herringbone



TIMBER GROVE II in turquoise and sprout / installed stagger



TIMBER GROVE II in sprout, juniper, hemlock and mandarin / installed stagger

TIMBER GROVE II in juniper, caribe, indigo and hemlock / installed stagger

custom area rug / INK in slate



 **Benjamin Moore** × **patcraft**<sup>®</sup>

Transform space, floor to ceiling. Patcraft and Benjamin Moore have collaborated to make the sampling process quicker and easier. The Patcraft design team has specially curated a collection of Benjamin Moore paint colors to coordinate with our products. Create coordinated palettes and order flooring samples and 4 x 8 paint swatches through our digital design tray tool at [patcraft.com](https://www.patcraft.com).

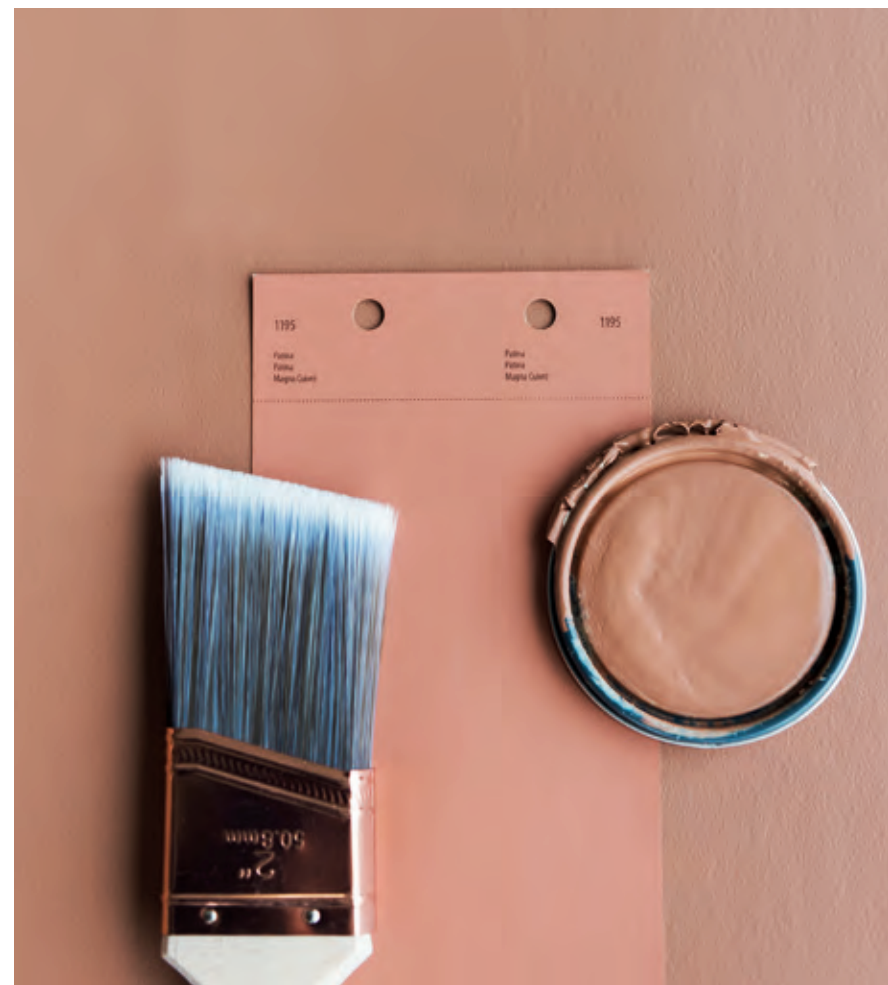


## Dream. Drag. Drop. Deliver.

Say 'hello' to the latest resource in our designer's toolkit to make the sampling process quicker and easier – **the virtual design tray**. At your desk or on the go, create a custom mix in a couple of clicks for a curated set of swatches sent to you next day. Choose from hundreds of styles of carpet and hard surface, in hundreds of colors. Coordinate with our yarn color poms and Benjamin Moore paint swatches to tie it all together.

Ready to return the samples you no longer need? When your project is complete, simply send them back with the return label included in your box for easy, convenient shipping. Create something beautiful at **patcraft.com**.





INSPIRE.

CREATE.

TRANSFORM **COLOR.**



patcraft®