



Inside Stories |



BROADLOOM

CHAPTER 1 / CONTINUITY SOLID / CONTINUITY TONAL / LOCATION / MOTIF / REFERENCE

CHAPTER 2 / ERA / SOCRATES II / TESTED / VIRTUAL SPACE

VIRTUAL SPACE in creekbed



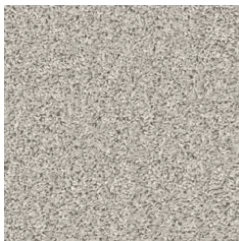








COLORWAYS 10618 | CONTINUITY SOLID



00112 beech



00110 sea floor



00510 cement



00111 breeze

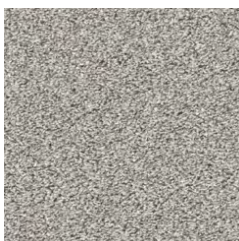


00710 forever pewter



00732 morning latte

COLORWAYS 10619 | CONTINUITY TONAL



00122 ornamental gat



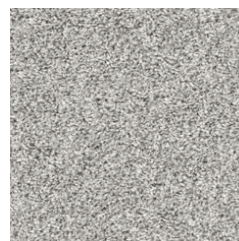
00120 magnolia bloom



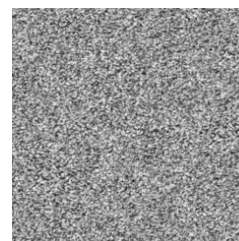
00720 barely there



00721 roasted coffee

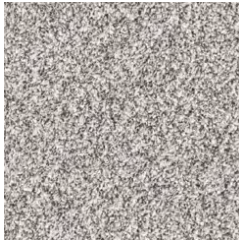


00500 cloudy skies

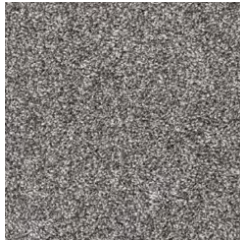


00501 silversmith

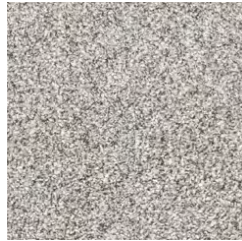
COLORWAYS 10620 | LOCATION



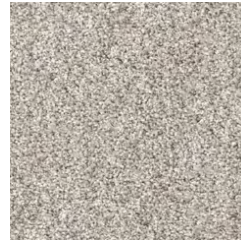
00512 oxford



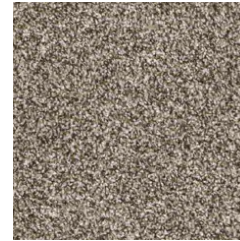
00700 english oak



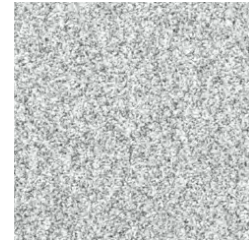
00111 mushroom



00105 daytona sand

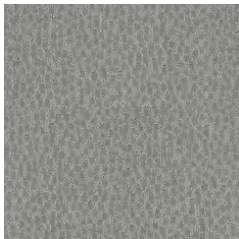


00705 mocha latte

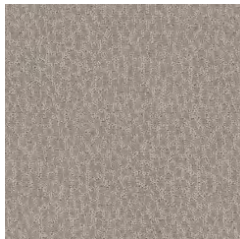


00507 thin ice

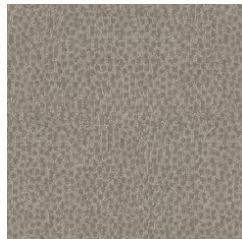
COLORWAYS 10527 | MOTIF



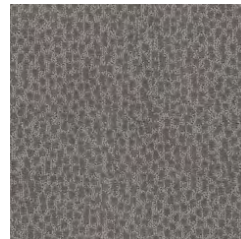
00532 secure



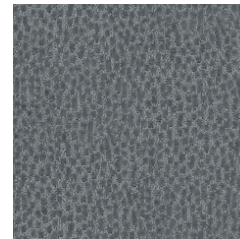
00752 beige tint



00761 candle lit



00722 froth

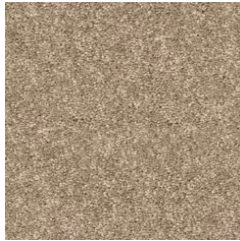


00555 stone path

COLORWAYS 10621 | REFERENCE



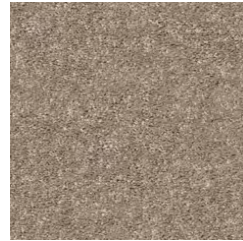
00107 tassel



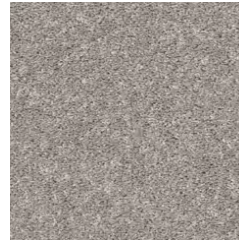
00201 warm wood



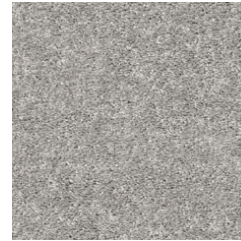
00102 angel cloud



00701 cedar key



00702 anew grey



00501 ink spot



REFERENCE in tassel

PRODUCT SPECIFICATIONS

INSIDE STORIES: CHAPTER 1

CONTINUITY SOLID

style / 10618

product size	12 ft 3.66 m
gauge	3/16 21.00 per 10 cm
tufted yarn weight	25 oz/yd ² 847.64 g/m ²
stitches	8 per inch 30.84 per 10 cm
fiber type	Eclipse High Performance PET
backing type	ClassicBac
soil protection	R2X

CONTINUITY TONAL

style / 10619

product size	12 ft 3.66 m
gauge	5/32 25.20 per 10 cm
tufted yarn weight	25 oz/yd ² 847.64 g/m ²
stitches	7 per inch 26.25 per 10 cm
fiber type	Eclipse High Performance PET
backing type	ClassicBac
soil protection	R2X

LOCATION

style / 10620

product size	12 ft 3.66 m
gauge	3/16 21.00 per 10 cm
tufted yarn weight	25 oz/yd ² 847.64 g/m ²
stitches	8 per inch 30.84 per 10 cm
fiber type	Eclipse High Performance PET
backing type	ClassicBac
soil protection	R2X

MOTIF

style / 10527

product size	12 ft 3.66 m
gauge	1/8 31.50 per 10 cm
tufted yarn weight	25 oz/yd ² 847.64 g/m ²
stitches	8.8 per inch 34.78 per 10 cm
fiber type	BCF Polyester
backing type	ClassicBac
soil protection	R2X

REFERENCE

style / 10621

product size	12 ft 3.66 m
gauge	5/32 25.20 per 10 cm
tufted yarn weight	25 oz/yd ² 847.64 g/m ²
stitches	10 per inch 40.03 per 10 cm
fiber type	Eclipse High Performance PET
backing type	ClassicBac
soil protection	R2X



ERA in marble







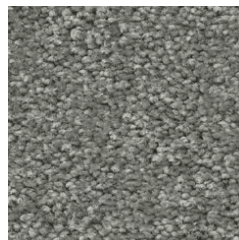
COLORWAYS 10622 | ERA



00113 marble



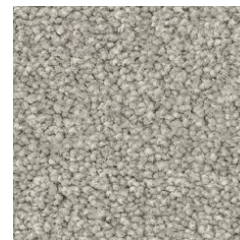
00714 barn wood



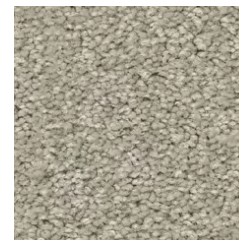
00701 slate



00111 cream puff



00510 picture frame



00712 smooth taupe

COLORWAYS 10068 | SOCRATES II 26 OZ



00110 hume



00120 emerson



00112 descartes



00530 hobbes

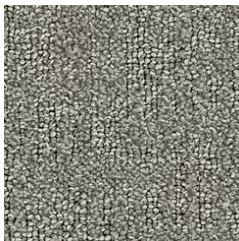


00550 voltaire

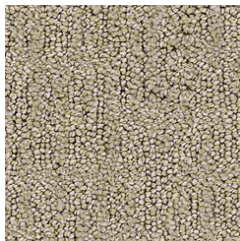


00540 spinoza

COLORWAYS 10443 | TESTED



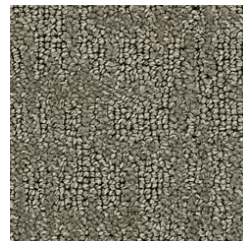
43530 faultless



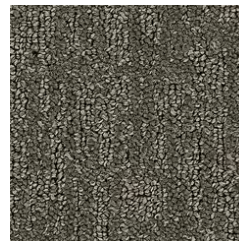
43110 certain



43120 reliable



43700 safe



43730 proved

COLORWAYS 10623 | VIRTUAL SPACE



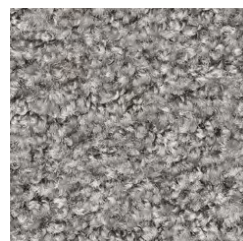
00102 aura



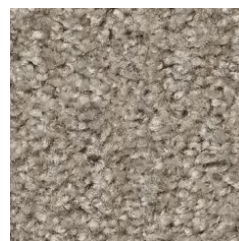
00700 creekbed



00702 hillsborough



00592 equestrian river



00790 indian river



00792 rustic brown

PRODUCT SPECIFICATIONS

INSIDE STORIES: CHAPTER 2

ERA

style / 10622

product size	12 ft 3.66 m
gauge	1/8 31.50 per 10 cm
tufted yarn weight	29.2 oz/yd ² 990.05 g/m ²
stitches	10 per inch 40.03 per 10 cm
fiber type	Nylon
backing type	ClassicBac
soil protection	R2X

SOCRATES II

style / 10068

product size	12 ft 3.66 m
gauge	1/8 31.50 per 10 cm
tufted yarn weight	26 oz/yd ² 881.55 g/m ²
stitches	7 per inch 26.25 per 10 cm
fiber type	EcoSolution Q Nylon
backing type	UltraLoc
soil protection	SSP

TESTED

style / 10443

product size	12 ft 3.66 m
gauge	1/10 39.37 per 10 cm
tufted yarn weight	28 oz/yd ² 949.36 g/m ²
stitches	11 per inch 42.65 per 10 cm
fiber type	EcoSolution Q Nylon
backing type	ClassicBac
soil protection	SSP

VIRTUAL SPACE

style / 10623

product size	12 ft 3.66 m
gauge	3/16 21.00 per 10 cm
tufted yarn weight	25 oz/yd ² 847.64 g/m ²
stitches	6 per inch 22.97 per 10 cm
fiber type	Nylon
backing type	ClassicBac
soil protection	R2X